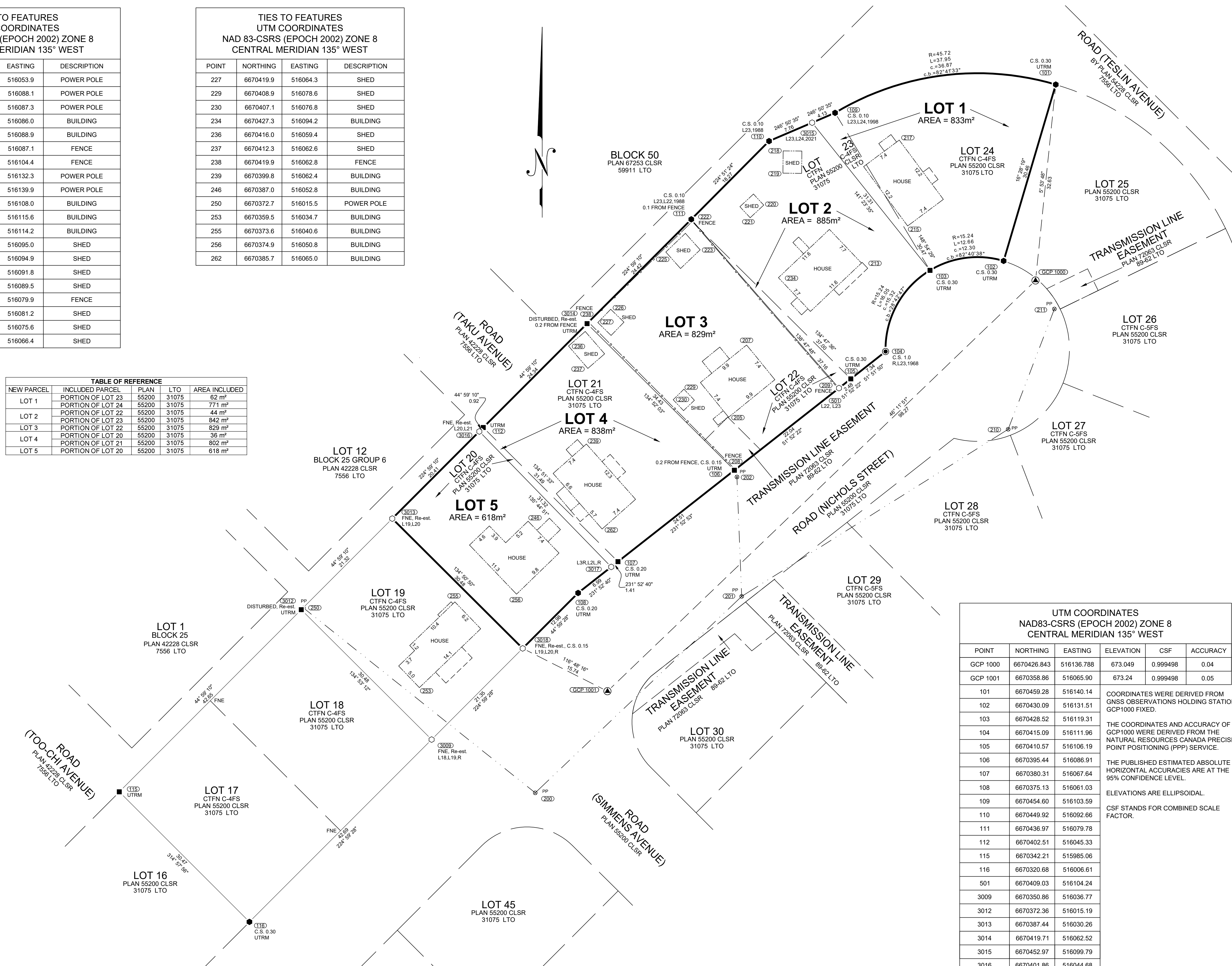


TIES TO FEATURES UTM COORDINATES NAD 83-CSRS (EPOCH 2002) ZONE 8 CENTRAL MERIDIAN 135° WEST			
POINT	NORTHING	EASTING	DESCRIPTION
200	6670342.0	516053.9	POWER POLE
201	6670374.6	516088.1	POWER POLE
202	6670394.3	516087.3	POWER POLE
205	6670404.2	516086.0	BUILDING
207	6670416.2	516088.9	BUILDING
208	6670395.6	516087.1	FENCE
209	6670408.7	516104.4	FENCE
210	6670402.2	516132.3	POWER POLE
211	6670422.1	516139.9	POWER POLE
213	6670429.7	516108.0	BUILDING
215	6670435.9	516115.6	BUILDING
217	6670450.1	516114.2	BUILDING
218	6670448.3	516095.0	SHED
219	6670444.6	516094.9	SHED
220	6670439.3	516091.8	SHED
221	6670437.2	516089.5	SHED
222	6670436.6	516079.9	FENCE
223	6670431.9	516081.2	SHED
225	6670431.6	516075.6	SHED
226	6670422.1	516066.4	SHED

TIES TO FEATURES UTM COORDINATES NAD 83-CSRS (EPOCH 2002) ZONE 8 CENTRAL MERIDIAN 135° WEST			
POINT	NORTHING	EASTING	DESCRIPTION
227	6670419.9	516064.3	SHED
229	6670408.9	516078.6	SHED
230	6670407.1	516076.8	SHED
234	6670427.3	516094.2	BUILDING
236	6670416.0	516059.4	SHED
237	6670412.3	516062.6	SHED
238	6670419.9	516062.8	FENCE
239	6670399.8	516062.4	BUILDING
246	6670387.0	516052.8	BUILDING
250	6670372.7	516015.5	POWER POLE
253	6670359.5	516034.7	BUILDING
255	6670373.6	516040.6	BUILDING
256	6670374.9	516050.8	BUILDING
262	6670385.7	516065.0	BUILDING

TABLE OF REFERENCE				
NEW PARCEL	INCLUDED PARCEL	PLAN	LTO	AREA INCLUDED
LOT 1	PORTION OF LOT 23	55200	31075	62 m <sup>2</sup>
	PORTION OF LOT 24	55200	31075	771 m <sup>2</sup>
LOT 2	PORTION OF LOT 22	55200	31075	44 m <sup>2</sup>
	PORTION OF LOT 23	55200	31075	842 m <sup>2</sup>
LOT 3	PORTION OF LOT 22	55200	31075	829 m <sup>2</sup>
LOT 4	PORTION OF LOT 20	55200	31075	36 m <sup>2</sup>
	PORTION OF LOT 21	55200	31075	802 m <sup>2</sup>
LOT 5	PORTION OF LOT 20	55200	31075	618 m <sup>2</sup>



PLAN OF SURVEY OF  
**LOTS 1 TO 5**  
WITHIN LOTS 20 TO 24, CTFN C-4FS, PLAN 55200 CLSR, 31075 LTO  
CARCROSS/ TAGISH FIRST NATION SETTLEMENT LAND

**CARCROSS  
YUKON**

SCALE 1:300

THE PLOT SIZE THAT WILL PROVIDE TRUE SCALE AND OPTIMUM READABILITY FOR THIS PLAN IS 609 mm X 1000 mm.

THIS SURVEY WAS EXECUTED DURING THE PERIOD JUNE 1, 2021 TO JUNE 8, 2021 BY PAUL A. BURBIDGE, CLS.

**LEGEND**

BEARINGS ARE UTM GRID, DERIVED FROM GNSS OBSERVATIONS AND ARE REFERRED TO THE CENTRAL MERIDIAN OF UTM ZONE 8 (135° WEST LONGITUDE).

THIS PLAN SHOWS HORIZONTAL GROUND LEVEL DISTANCES IN METRES AND DECIMALS THEREOF. TO COMPUTE GRID DISTANCES, MULTIPLY GROUND LEVEL DISTANCES BY THE AVERAGE COMBINED SCALE FACTOR OF 0.999497.

CLS STANDARD POST FOUND SHOWN THIS

OLD PATTERN IRON POST FOUND SHOWN THIS

CLS 77 POST FOUND SHOWN THIS

CLS 77 POST PLACED SHOWN THIS

20 cm SPIKE PLACED SHOWN THIS

GCP CONTROL STATION SHOWN THIS

TOPOGRAPHIC TIES SHOWN THIS

POWER POLE SHOWN THIS

LANDS DEALT WITH BY THIS PLAN BOUNDED THIS

BUILDING SHOWN THIS

DECKS SHOWN THIS

OVERHEAD POWERLINE SHOWN THIS

TIES SHOWN THIS

FENCELINE SHOWN THIS

UTRM DENOTES UNABLE TO READ MARKINGS.

C.S. DENOTES COUNTERSUNK POST.

CTFN DENOTES CARCROSS / TAGISH FIRST NATION

POSTS PLACED ARE MARKED WITH "2021" FOR THE YEAR OF THE SURVEY.

ALL PLACED MONUMENTS ARE MARKED WITH 0.05m X 0.05m X 0.60m LONG WOODEN MARKERS, UNLESS OTHERWISE NOTED. THESE MARKERS ARE PLACED 0.30m FROM THE MONUMENTS.

ALL BOUNDARIES ARE OPEN UNLESS OTHERWISE NOTED ON PLAN.

UTM COORDINATES NAD83-CSRS (EPOCH 2002) ZONE 8 CENTRAL MERIDIAN 135° WEST					
POINT	NORTHING	EASTING	ELEVATION	CSF	ACCURACY
GCP 1000	6670426.843	516136.788	673.049	0.999498	0.04
GCP 1001	6670358.86	516065.90	673.24	0.999498	0.05
101	6670459.28	516140.14	COORDINATES WERE DERIVED FROM GNSS OBSERVATIONS HOLDING STATION GCP1000 FIXED.		
102	6670430.09	516131.51	THE COORDINATES AND ACCURACY OF GCP1000 WERE DERIVED FROM THE NATURAL RESOURCES CANADA PRECISE POINT POSITIONING (PPP) SERVICE.		
103	6670428.52	516119.31	THE PUBLISHED ESTIMATED ABSOLUTE HORIZONTAL ACCURACIES ARE AT THE 95% CONFIDENCE LEVEL.		
104	6670415.09	516111.96	ELEVATIONS ARE ELLIPSOIDAL.		
105	6670410.57	516106.19	CSF STANDS FOR COMBINED SCALE FACTOR.		
106	6670395.44	516086.91			
107	6670380.31	516067.64			
108	6670375.13	516061.03			
109	6670454.60	516103.59			
110	6670449.92	516092.66			
111	6670436.97	516079.78			
112	6670402.51	516045.33			
115	6670342.21	515985.06			
116	6670320.68	516006.61			
501	6670409.03	516104.24			
3009	6670350.86	516036.77			
3012	6670372.36	516015.19			
3013	6670387.44	516030.26			
3014	6670419.71	516062.52			
3015	6670452.97	516099.79			
3016	6670401.86	516044.68			
3017	6670379.44	516066.53			
3018	6670365.95	516051.86			