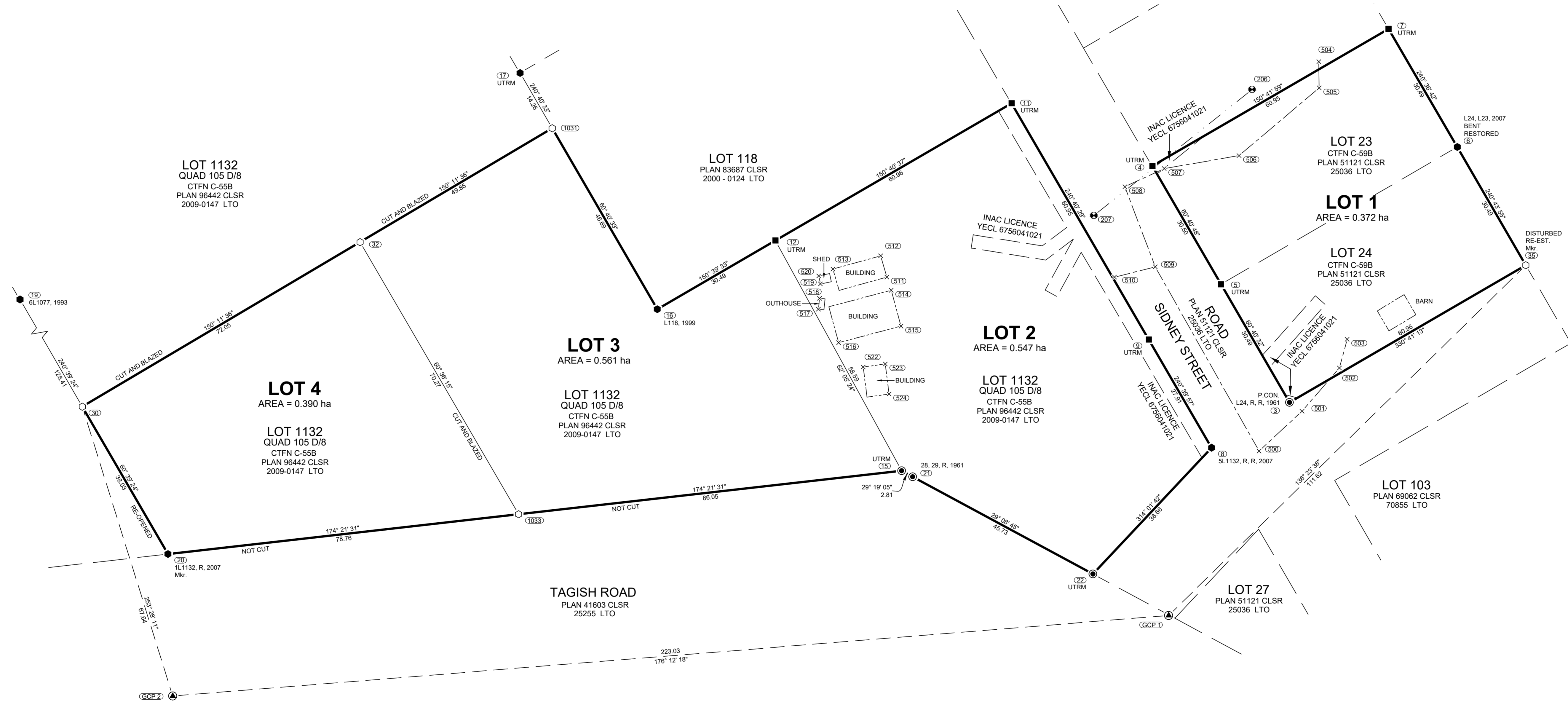
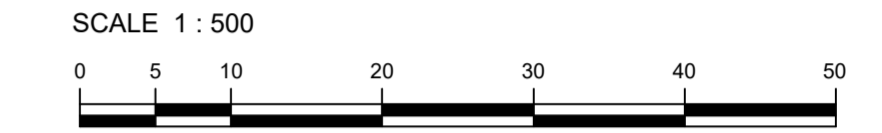


UTM COORDINATES NAD83-CSRS (EPOCH 2002) ZONE 8 CENTRAL MERIDIAN 135° WEST					
POINT	NORTHING	EASTING	ELEVATION	CSF	ACCURACY
GCP 1	6686693.375	540195.203	664.306	0.999516	0.05
GCP 2	6686470.94	540209.96	665.13	0.999516	0.05
3	6686721.03	540148.09	COORDINATES WERE DERIVED FROM GNSS OBSERVATIONS HOLDING STATION GCP 1 FIXED.		
4	6686691.18	540094.94	THE COORDINATES AND ACCURACY OF GCP 1 WERE DERIVED FROM THE NATURAL RESOURCES CANADA PRECISE POINT POSITIONING (PPP) SERVICE.		
5	6686706.10	540121.52	THE PUBLISHED ESTIMATED ABSOLUTE HORIZONTAL ACCURACIES ARE AT THE 95% CONFIDENCE LEVEL.		
6	6686759.26	540091.68	ELEVATIONS ARE ELLIPSOIDAL.		
7	6686744.31	540065.12	CSF STANDS FOR COMBINED SCALE FACTOR.		
8	6686703.48	540157.93			
9	6686689.81	540133.61			
11	6686659.98	540080.49			
12	6686606.85	540110.33			
15	6686634.26	540162.09			
16	6686580.28	540125.27			
17	6686550.45	540072.16			
19	6686388.81	540033.27			
20	6686470.33	540178.28			
21	6686636.71	540163.46			
22	6686676.62	540185.72			
30	6686451.71	540145.15			
32	6686514.20	540109.35			
35	6686774.16	540118.26			
1031	6686557.43	540084.58			
1033	6686548.67	540170.54			

TIES TO FEATURES UTM COORDINATES NAD 83-CSRS (EPOCH 2002) ZONE 8 CENTRAL MERIDIAN 135° WEST			
POINT	NORTHING	EASTING	DESCRIPTION
206	6686713.7	540078.2	POWER POLE
207	6686678.0	540105.8	POWER POLE
500	6686714.1	540158.8	ACCESS
501	6686723.8	540150.1	ACCESS
502	6686732.2	540140.6	ACCESS
503	6686734.1	540134.2	ACCESS
504	6686728.6	540072.2	ACCESS
505	6686728.6	540078.1	ACCESS
506	6686710.5	540092.9	ACCESS
507	6686693.8	540095.5	ACCESS
508	6686685.0	540099.5	ACCESS
509	6686691.5	540117.4	ACCESS
510	6686682.4	540119.6	ACCESS
511	6686631.6	540118.8	BUILDING
512	6686630.3	540114.1	BUILDING
513	6686619.6	540116.9	BUILDING
514	6686632.5	540121.8	BUILDING
515	6686634.6	540129.8	BUILDING
516	6686620.6	540133.3	BUILDING
517	6686616.2	540125.8	OUTHOUSE
518	6686616.5	540123.4	OUTHOUSE
519	6686616.8	540120.2	SHED
520	6686616.4	540118.4	SHED
522	6686626.0	540138.8	BUILDING
523	6686631.0	540138.2	BUILDING
524	6686631.7	540144.9	BUILDING



PLAN OF SURVEY OF  
**LOT 1**  
 ( WITHIN LOTS 23 AND 24, 51121 CLSR, 25036 LTO )  
 CARCROSS / TAGISH FIRST NATION SETTLEMENT LAND SELECTION C-59B  
 AND  
**LOTS 2 TO 4**  
 ( WITHIN LOT 1132, QUAD 105 D/8, 96442 CLSR, 2009-0147 LTO )  
 CARCROSS / TAGISH FIRST NATION SETTLEMENT LAND SELECTION C-55B  
**TAGISH  
 YUKON**



THE PLOT SIZE THAT WILL PROVIDE TRUE SCALE AND OPTIMUM READABILITY FOR THIS PLAN IS 609 mm X 1100 mm.  
 THIS SURVEY WAS EXECUTED DURING THE PERIOD OCTOBER 20, 2021 TO OCTOBER 21, 2021 BY PAUL A. BURBIDGE, CLS.

**LEGEND**  
 BEARINGS ARE UTM GRID, DERIVED FROM GNSS OBSERVATIONS AND ARE REFERRED TO THE CENTRAL MERIDIAN OF UTM ZONE 8 (135° WEST LONGITUDE).  
 THIS PLAN SHOWS HORIZONTAL GROUND LEVEL DISTANCES IN METRES AND DECIMALS THEREOF. TO COMPUTE GRID DISTANCES, MULTIPLY GROUND LEVEL DISTANCES BY THE AVERAGE COMBINED SCALE FACTOR OF 0.999516.

- CLS STANDARD POST FOUND SHOWN THUS
- OLD PATTERN IRON POST FOUND SHOWN THUS
- CLS '77' POST FOUND SHOWN THUS
- CLS '77' POST PLACED SHOWN THUS
- 20 cm SPIKE PLACED SHOWN THUS
- GCP CONTROL STATION SHOWN THUS
- TOPOGRAPHIC TIES SHOWN THUS
- POWER POLE SHOWN THUS
- LANDS DEALT WITH BY THIS PLAN BOUNDED THUS
- BUILDING SHOWN THUS
- CENTERLINE ACCESS SHOWN THUS
- OVERHEAD POWERLINE SHOWN THUS
- TIES SHOWN THUS
- UTRM DENOTES UNABLE TO READ MARKINGS.
- CTFN DENOTES CARCROSS / TAGISH FIRST NATION.
- POSTS PLACED ARE MARKED WITH "2021" FOR THE YEAR OF THE SURVEY.
- ALL PLACED MONUMENTS ARE MARKED WITH 0.05m X 0.05m X 0.60m LONG WOODEN MARKERS, UNLESS OTHERWISE NOTED. THESE MARKERS ARE PLACED 0.30m FROM THE MONUMENTS.
- ALL EXISTING BOUNDARIES ARE OPEN UNLESS OTHERWISE NOTED ON PLAN.