

UTM COORDINATES NAD83-CSRS (EPOCH 2002) ZONE 8 CENTRAL MERIDIAN 135° WEST					
POINT	NORTHING	EASTING	ELEVATION	CSF	ACCURACY
GCP 1229	6669691.967	516616.086	664.753	0.999499	0.05
GCP 1230	6669511.62	516657.67	685.55	0.999496	0.05
107	6669620.51	516620.73			
111	6669689.34	516606.29			
122	6669745.05	516811.96			
123	6669687.71	516622.85			
126	6669693.25	516859.40			
2000	6669667.46	516774.74			
2001	6669717.20	516720.12			
2002	6669708.37	516691.00			
2003	6669699.54	516661.88			
2004	6669676.47	516619.83			
2050	6669676.44	516700.57			
2053	6669689.74	516629.55			
2054	6669628.82	516647.91			
2055	6669698.01	516656.85			
2056	6669637.12	516675.16			
2057	6669658.70	516638.91			
2058	6669666.58	516666.30			
2059	6669715.62	516714.92			
2060	6669654.80	516733.17			
2061	6669716.94	516837.70			
2062	6669682.36	516724.90			
2063	6669706.26	516802.85			
2064	6669723.70	516741.55			
2065	6669729.98	516762.27			
2066	6669696.86	516772.21			
2067	6669690.51	516751.50			
2100	6669695.10	516766.45			
2124	6669728.24	516756.52			
2125	6669739.28	516792.94			
2127	6669678.56	516811.16			
2128	6669656.36	516738.31			
2129	6669647.51	516709.25			
2130	6669638.65	516680.17			
2131	6669626.78	516641.22			
2132	6669636.40	516631.69			
3000	6669724.34	516743.66			
3001	6669691.16	516753.61			

COORDINATES WERE DERIVED FROM GNSS OBSERVATIONS HOLDING STATION GCP 1229 FIXED.

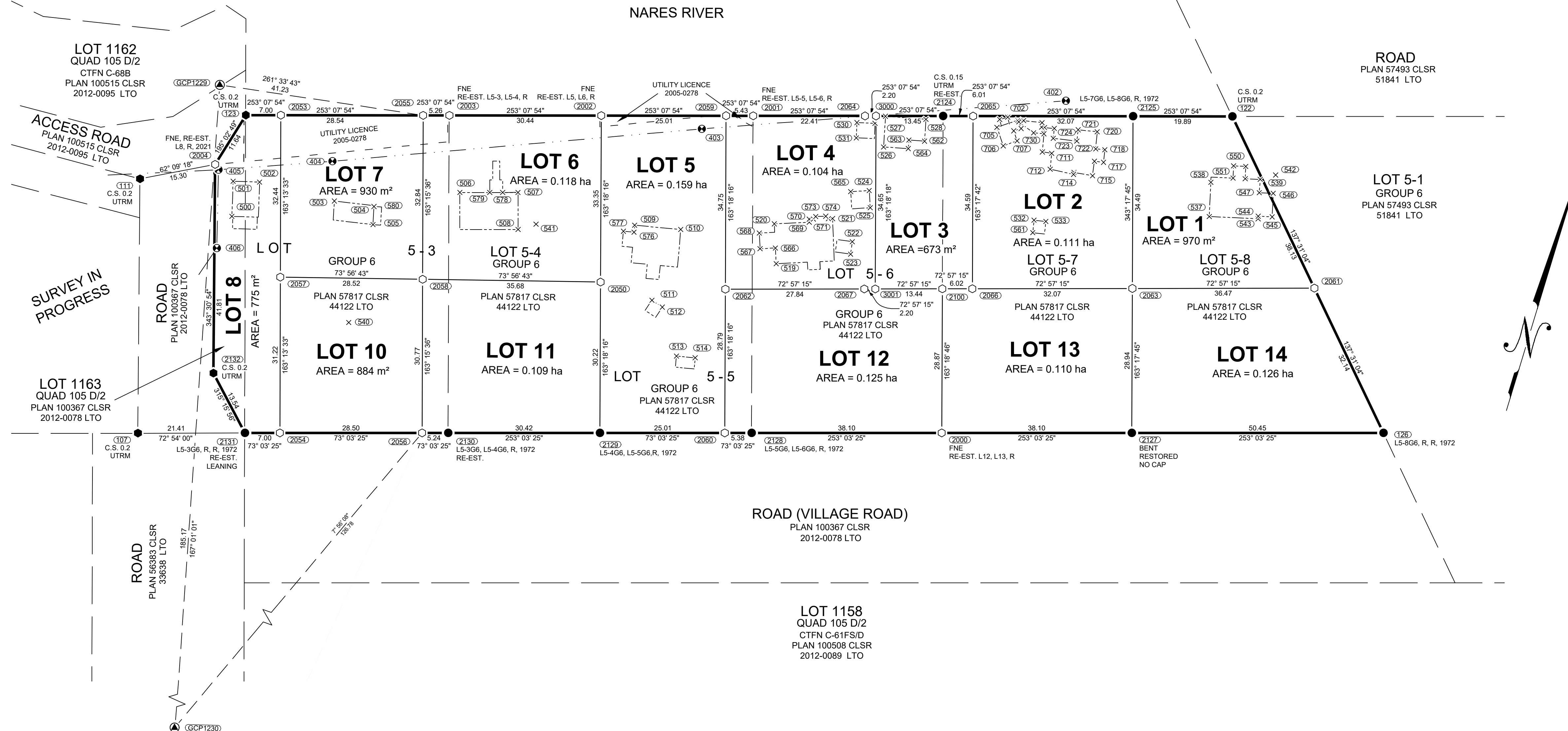
THE COORDINATES AND ACCURACY OF GCP 1229 WERE DERIVED FROM THE NATURAL RESOURCES CANADA PRECISE POINT POSITIONING (PPP) SERVICE.

THE PUBLISHED ESTIMATED ABSOLUTE HORIZONTAL ACCURACIES ARE AT THE 95% CONFIDENCE LEVEL.

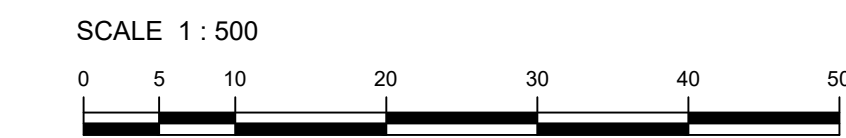
GCP1230 IS OUTSIDE THE LIMITS OF THIS PLAN.

ELEVATIONS ARE ELLIPSOIDAL.

CSF STANDS FOR COMBINED SCALE FACTOR.



PLAN OF SURVEY OF  
**LOTS 1 TO 7 AND LOTS 10 TO 14**  
( WITHIN LOTS 5-3 TO 5-8, GROUP 6, PLAN 57817 CLSR, 44122 LTO )  
CARCROSS / TAGISH FIRST NATION SETTLEMENT LAND SELECTION C-79FS/D  
AND  
**LOT 8**  
( WITHIN LOT 5-3, GROUP 6, PLAN 57817 CLSR, 44122 LTO AND  
LOT 1163, QUAD 105 D/2, PLAN 100367 CLSR, 2012-0078 LTO )  
CARCROSS / TAGISH FIRST NATION SETTLEMENT LAND SELECTION C-79FS/D  
**CARCROSS  
YUKON**



THE PLOT SIZE THAT WILL PROVIDE TRUE SCALE AND OPTIMUM READABILITY FOR THIS PLAN IS 609 mm X 1100 mm.

THIS SURVEY WAS EXECUTED DURING THE PERIOD OCTOBER 14, 2021 TO OCTOBER 19, 2021 BY PAUL A. BURBIDGE, CLS.

**LEGEND**

BEARINGS ARE UTM GRID, DERIVED FROM GNSS OBSERVATIONS AND ARE REFERRED TO THE CENTRAL MERIDIAN OF UTM ZONE 8 (135° WEST LONGITUDE).

THIS PLAN SHOWS HORIZONTAL GROUND LEVEL DISTANCES IN METRES AND DECIMALS THEREOF. TO COMPUTE GRID DISTANCES, MULTIPLY GROUND LEVEL DISTANCES BY THE AVERAGE COMBINED SCALE FACTOR OF 0.999499.

- CLS '69 POST FOUND SHOWN THUS . . . . . ●
- CLS '77 POST FOUND SHOWN THUS . . . . . ●
- CLS '77 POST PLACED SHOWN THUS . . . . . ○
- 20 cm SPIKE PLACED SHOWN THUS . . . . . ⊕
- GCP CONTROL STATION SHOWN THUS . . . . . GCP
- TOPOGRAPHIC TIES SHOWN THUS . . . . . x
- POWER POLE SHOWN THUS . . . . . ⊕
- LANDS DEALT WITH BY THIS PLAN BOUNDED THUS . . . . . ———
- BUILDING SHOWN THUS . . . . . ———
- DECKS SHOWN THUS . . . . . - - - - -
- OVERHEAD POWERLINE SHOWN THUS . . . . . ———
- TIES SHOWN THUS . . . . . ———
- UTRM DENOTES UNABLE TO READ MARKINGS.
- C.S. DENOTES COUNTERSUNK POST.
- CTFN DENOTES CARCROSS / TAGISH FIRST NATION.
- POSTS PLACED ARE MARKED WITH "2021" FOR THE YEAR OF THE SURVEY.
- ALL PLACED MONUMENTS ARE MARKED WITH 0.05m X 0.05m X 0.60m LONG WOODEN MARKERS, UNLESS OTHERWISE NOTED. THESE MARKERS ARE PLACED 0.30m FROM THE MONUMENTS.
- ALL NEW BOUNDARIES ARE OPEN UNLESS OTHERWISE NOTED ON PLAN.

TIES TO FEATURES UTM COORDINATES NAD 83-CSRS (EPOCH 2002) ZONE 8 CENTRAL MERIDIAN 135° WEST				
POINT	NORTHING	EASTING	DESCRIPTION	
402	6669738.3	516779.1	POWER POLE	
403	6669711.7	516711.0	POWER POLE	
404	6669683.9	516642.1	POWER POLE	
405	6669675.6	516620.8	POWER POLE	
406	6669660.5	516625.0	POWER POLE	
500	6669667.5	516626.1	BUILDING	
501	6669674.3	516624.3	BUILDING	
502	6669675.7	516629.4	BUILDING	
503	6669676.4	516644.8	BUILDING	
504	6669677.8	516652.7	BUILDING	
505	6669674.2	516653.6	BUILDING	
506	6669685.4	516668.4	BUILDING	
507	6669688.8	516679.5	BUILDING	
508	6669681.7	516681.7	BUILDING	
509	6669689.3	516703.8	BUILDING	
510	6669691.2	516712.9	BUILDING	
511	6669676.0	516711.5	BUILDING	
512	6669675.2	516713.9	BUILDING	
513	6669666.7	516719.4	BUILDING	
514	6669667.4	516723.1	BUILDING	

TIES TO FEATURES UTM COORDINATES NAD 83-CSRS (EPOCH 2002) ZONE 8 CENTRAL MERIDIAN 135° WEST				
POINT	NORTHING	EASTING	DESCRIPTION	
519	6669690.2	516733.1	BUILDING	
520	6669697.7	516730.5	BUILDING	
521	6669702.1	516741.3	BUILDING	
522	6669698.9	516746.4	BUILDING	
523	6669696.4	516746.8	BUILDING	
524	6669709.6	516746.7	BUILDING	
525	6669706.4	516747.9	BUILDING	
526	6669718.8	516746.9	BUILDING	
527	6669724.8	516745.5	BUILDING	
528	6669726.6	516753.4	BUILDING	
529	6669722.9	516743.9	BUILDING	
530	6669721.9	516740.4	BUILDING	
531	6669719.0	516741.2	BUILDING	
532	6669713.6	516780.0	BUILDING	
533	6669714.0	516782.4	BUILDING	
537	6669693.2	516732.1	BUILDING	
538	6669731.2	516811.7	BUILDING	
539	6669734.6	516821.0	BUILDING	
540	6669654.0	516654.7	SEPTIC	
541	6669683.8	516684.8	SEPTIC	

TIES TO FEATURES UTM COORDINATES NAD 83-CSRS (EPOCH 2002) ZONE 8 CENTRAL MERIDIAN 135° WEST				
POINT	NORTHING	EASTING	DESCRIPTION	
542	6669736.4	516823.7	SEPTIC	
543	6669726.9	516822.9	BUILDING	
544	6669727.4	516822.8	BUILDING	
545	6669728.1	516825.5	BUILDING	
546	6669732.7	516824.3	BUILDING	
547	6669732.0	516821.6	BUILDING	
548	6669733.9	516818.1	BUILDING	
549	6669736.3	516817.5	BUILDING	
550	6669735.6	516815.1	BUILDING	
551	6669733.3	516815.7	BUILDING	
561	6669711.1	516780.5	BUILDING	
562	6669722.3	516754.4	BUILDING	
563	6669721.6	516751.4	BUILDING	
564	6669720.0	516751.8	BUILDING	
565	6669708.4	516743.2	BUILDING	
566	6669693.2	516732.1	BUILDING	
567	6669692.1	516729.2	BUILDING	
568	6669695.1	516728.1	BUILDING	
569	6669700.1	516737.1	BUILDING	
570	6669700.7	516736.9	BUILDING	

TIES TO FEATURES UTM COORDINATES NAD 83-CSRS (EPOCH 2002) ZONE 8 CENTRAL MERIDIAN 135° WEST				
POINT	NORTHING	EASTING	DESCRIPTION	
571	6669700.9	516737.7	BUILDING	
572	6669701.9	516740.5	BUILDING	
573	6669701.6	516738.0	BUILDING	
574	6669702.2	516739.9	BUILDING	
576	6669687.9	516704.1	BUILDING	
577	6669687.5	516702.0	BUILDING	
578	6669687.9	516676.6	BUILDING	
579	6669687.1	516674.1	BUILDING	
580	6669677.7	516652.7	BUILDING	
702	6669731.8	516769.0	FUEL TANK	
703	6669730.9	516769.0	FUEL TANK	
704	6669731.8	516771.1	SHED	
705	6669729.2	516767.5	SHED	
706	6669726.0	516768.8	SHED	
707	6669727.8	516772.1	SHED	
708	6669729.5	516770.9	SHED	
709	6669730.4	516772.2	SHED	
710	6669727.1	516777.5	BUILDING	
711	6669727.4	516779.5	BUILDING	
712	6669724.3	516780.1	BUILDING	

TIES TO FEATURES UTM COORDINATES NAD 83-CSRS (EPOCH 2002) ZONE 8 CENTRAL MERIDIAN 135° WEST				
POINT	NORTHING	EASTING	DESCRIPTION	
713	6669725.1	516784.9	BUILDING	
714	6669724.7	516784.9	BUILDING	
715	6669725.5	516788.6	BUILDING	
716	6669728.4	516788.1	BUILDING	
717	6669728.7	516790.0	BUILDING	
718	6669731.2	516789.5	BUILDING	
719	6669730.8	516787.7	BUILDING	
720	6669734.2	516787.0	BUILDING	
721	6669733.5	516783.2	BUILDING	
722	6669731.2	516783.6	BUILDING	
723	6669730.4	516778.9	BUILDING	
724	6669732.3	516778.5	BUILDING	
725	6669731.9	516776.6	BUILDING	
726	6669731.9	516776.0	DECK	
727	6669732.7	516775.9	DECK	
728	6669732.1	516772.2	DECK	
729	6669731.5	516771.3	DECK	
730	6669730.3	516774.8	DECK	
731	6669730.7	516776.9	DECK	

TABLE OF REFERENCE				
NEW PARCEL	INCLUDED PARCEL	CLSR PLAN	LTO PLAN	AREA INCLUDED
LOT 1	PORTION OF LOT 5-8	57817	44122	970 m²
LOT 2	PORTION OF LOT 5-7	57817	44122	0.111 ha
LOT 3	PORTION OF LOT 5-7	57817	44122	210 m²
	PORTION OF LOT 5-6	57817	44122	463 m²
LOT 4	PORTION OF LOT 5-6	57817	44122	850 m²
	PORTION OF LOT 5-5	57817	44122	190 m²
LOT 5	PORTION OF LOT 5-5	57817	44122	0.159 ha
LOT 6	PORTION OF LOT 5-4	57817	44122	0.101 ha
LOT 7	PORTION OF LOT 5-3	57817	44122	930 m²
LOT 8	PORTION OF LOT 5-3	57817	44122	450 m²
	PORTION OF LOT 1163	100367	2012-0078	330 m²
LOT 10	PORTION OF LOT 5-3	57817	44122	880 m²
LOT 11	PORTION OF LOT 5-3	57817	44122	160 m²
	PORTION OF LOT 5-4	57817	44122	930 m²
LOT 12	PORTION OF LOT 5-5	57817	44122	130 m²
	PORTION OF LOT 5-6	57817	44122	0.110 ha
LOT 13	PORTION OF LOT 5-7	57817	44122	0.110 ha
LOT 14	PORTION OF LOT 5-8	57817	44122	0.126 ha