

UTM COORDINATES NAD83-CSR S (EPOCH 2002) ZONE 8 CENTRAL MERIDIAN 135° WEST

POINT	NORTHING	EASTING	ELEVATION	CSF	ACCURACY
GCP 101601	6669125.871	517436.189	701.217	0.999494	0.05
GCP 101501	6669632.90	517028.02	679.95	0.999497	0.05
5	6669532.15	517437.75			
6	6669431.78	517517.95			
7	6669495.00	517441.38			
500	6669233.69	517329.83			
501	6669235.61	517348.36			
502	6669220.85	517373.82			
503	6669211.27	517373.12			
504	6669227.76	517348.68			
2001	6669494.43	517188.58			
2002	6669527.39	517213.10			
2003	6669481.67	517276.27			
2004	6669463.58	517235.67			
2005	6669475.43	517245.33			
2006	6669439.88	517304.73			
2007	6669424.15	517263.39			
2008	6669437.80	517283.36			
2010	6669428.30	517312.99			
2011	6669415.34	517329.56			
2012	6669376.67	517296.77			
2013	6669343.21	517320.29			
2014	6669378.82	517361.20			
2015	6669393.72	517357.22			
2018	6669450.99	517362.88			
2019	6669465.52	517343.50			
2020	6669434.91	517384.32			
2024	6669386.20	517412.88			
2025	6669419.17	517405.31			
2026	6669333.96	517373.19			
2027	6669324.36	517377.50			
2028	6669323.42	517334.20			
2029	6669308.91	517341.15			
2030	6669290.36	517350.03			
2031	6669270.40	517342.91			
2032	6669288.13	517393.80			
2033	6669269.85	517388.37			
2034	6669238.12	517378.95			
2035	6669249.87	517370.97			
2036	6669251.87	517336.31			
2037	6669225.26	517326.83			
2038	6669217.95	517372.96			
2040	6669189.50	517373.65			
2041	6669193.50	517352.13			
2042	6669179.75	517329.06			
2043	6669153.70	517353.08			
2044	6669168.44	517374.09			
2045	6669161.13	517400.93			
2047	6669145.00	517416.44			
2048	6669133.21	517415.43			
2049	6669114.61	517389.14			
2056	6669443.60	517316.82			

COORDINATES WERE DERIVED FROM GNSS OBSERVATIONS HOLDING STATION GCP 101601 FIXED.

THE COORDINATES AND ACCURACY OF GCP 101601 WERE DERIVED FROM THE NATURAL RESOURCES CANADA PRECISE POINT POSITIONING (PPP) SERVICE.

THE PUBLISHED ESTIMATED ABSOLUTE HORIZONTAL ACCURACIES ARE AT THE 95% CONFIDENCE LEVEL.

GCP 101501 IS OUTSIDE THE LIMITS OF THIS PLAN.

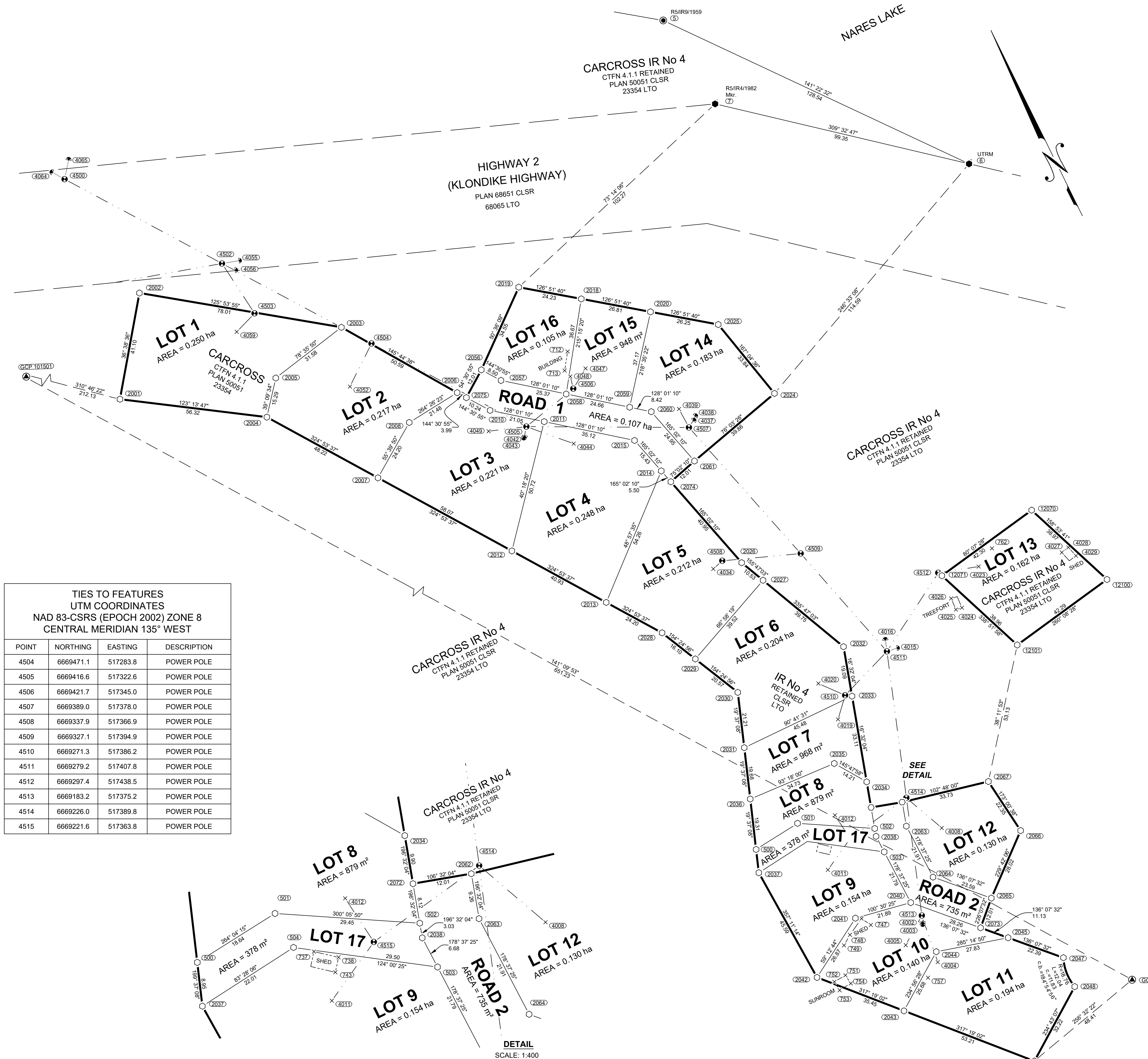
ELEVATIONS ARE ELLIPSOIDAL.

CSF STANDS FOR COMBINED SCALE FACTOR.

POINT	NORTHING	EASTING
2057	6669436.68	517321.75
2058	6669421.06	517341.72
2059	6669405.88	517361.15
2060	6669400.70	517367.77
2061	6669376.60	517374.21
2062	6669252.22	517387.64
2063	6669216.34	517385.01
2064	6669194.46	517385.53
2065	6669177.48	517401.87
2066	6669195.58	517423.24
2067	6669217.75	517420.52
2072	6669228.63	517376.14
2073	6669169.14	517393.22
2074	6669373.50	517362.62
2075	6669436.63	517307.04
12070	6669303.06	517480.97
12071	6669295.81	517439.32
12100	6669266.72	517495.00
12101	6669259.48	517453.36

TIES TO FEATURES UTM COORDINATES NAD 83-CSR S (EPOCH 2002) ZONE 8 CENTRAL MERIDIAN 135° WEST

POINT	NORTHING	EASTING	DESCRIPTION
712	6669435.3	517349.4	BUILDING
713	6669429.3	517345.1	BUILDING
737	6669225.2	517352.0	WOOD SHED
738	6669221.9	517356.0	WOOD SHED
743	6669219.5	517354.1	WOOD SHED
747	6669188.6	517356.2	SHED
748	6669188.7	517347.5	SHED
749	6669186.1	517343.7	SHED
751	6669175.7	517339.1	SUNROOM
752	6669175.3	517334.3	SUNROOM
753	6669171.6	517334.6	SUNROOM
754	6669172.0	517339.6	SUNROOM
757	6669161.0	517366.9	SUCK OUT
762	6669296.7	517461.0	SUCK OUT
4002	6669181.0	517374.4	ANCHOR
4003	6669180.3	517374.1	ANCHOR
4004	6669164.6	517372.8	PLINE
4005	6669175.8	517364.8	PLINE
4008	6669209.7	517396.8	PLINE
4011	6669214.6	517350.9	PLINE
4012	6669232.1	517362.5	PLINE
4015	6669278.7	517411.8	ANCHOR
4016	6669283.3	517409.1	ANCHOR
4019	6669264.3	517379.7	PLINE
4020	6669279.8	517379.0	PLINE
4023	6669292.7	517453.4	PLINE
4024	6669281.5	517440.8	TREEFORT
4025	6669281.9	517438.4	TREEFORT
4026	6669286.5	517438.6	TREEFORT
4027	6669283.6	517484.1	WOOD SHED
4028	6669284.2	517487.2	WOOD SHED
4029	6669280.0	517488.4	WOOD SHED
4034	6669336.5	517362.5	PLINE
4037	6669390.5	517380.6	ANCHOR
4038	6669391.7	517382.0	ANCHOR
4039	6669397.0	517377.7	PLINE
4042	6669413.8	517320.6	ANCHOR
4043	6669413.4	517320.0	ANCHOR
4044	6669402.9	517335.9	PLINE
4047	6669426.5	517352.6	PLINE
4048	6669426.3	517346.1	PLINE
4049	6669421.4	517309.0	PLINE
4052	6669460.0	517269.2	PLINE
4055	6669521.6	517252.5	ANCHOR
4056	6669519.1	517249.6	ANCHOR
4059	6669497.8	517239.8	PLINE
4064	6669583.1	517203.8	ANCHOR
4065	6669584.7	517211.3	ANCHOR
4500	6669578.8	517206.7	POWER POLE
4502	6669523.6	517246.2	POWER POLE
4503	6669501.1	517249.0	POWER POLE



TIES TO FEATURES UTM COORDINATES NAD 83-CSR S (EPOCH 2002) ZONE 8 CENTRAL MERIDIAN 135° WEST

POINT	NORTHING	EASTING	DESCRIPTION
4504	6669471.1	517283.8	POWER POLE
4505	6669416.6	517322.6	POWER POLE
4506	6669421.7	517345.0	POWER POLE
4507	6669389.0	517378.0	POWER POLE
4508	6669337.9	517366.9	POWER POLE
4509	6669327.1	517394.9	POWER POLE
4510	6669271.3	517386.2	POWER POLE
4511	6669279.2	517407.8	POWER POLE
4512	6669297.4	517438.5	POWER POLE
4513	6669183.2	517375.2	POWER POLE
4514	6669226.0	517389.8	POWER POLE
4515	6669221.6	517363.8	POWER POLE

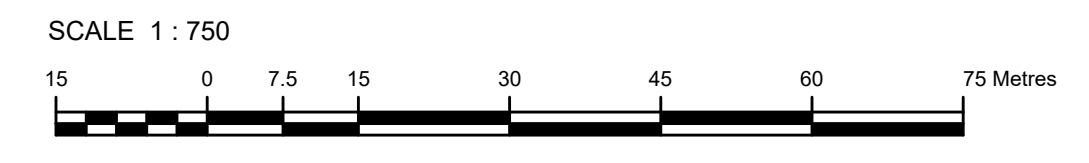
DETAIL SCALE: 1:400

DWG. No. **21-S-37806**



PLAN OF SURVEY OF **LOTS 1 TO 17 AND ROADS 1 AND 2** WITHIN CARCROSS I.R. No. 4, CARCROSS/TAGISH FIRST NATION SETTLEMENT LAND SELECTION (RETAINED RESERVE), PLAN 50051 CLSR, 23354 LTO

YUKON



THE PLOT SIZE THAT WILL PROVIDE TRUE SCALE AND OPTIMUM READABILITY FOR THIS PLAN IS 609 mm X 1200 mm.

THIS SURVEY WAS EXECUTED DURING THE PERIOD OCTOBER 28, 2021 TO NOVEMBER 18, 2021 BY PAUL A. BURBRIDGE, CLS.

LEGEND

BEARINGS ARE UTM GRID, DERIVED FROM GNSS OBSERVATIONS AND ARE REFERRED TO THE CENTRAL MERIDIAN OF UTM ZONE 8 (135° WEST LONGITUDE).

THIS PLAN SHOWS HORIZONTAL GROUND LEVEL DISTANCES IN METRES AND DECIMALS THEREOF. TO COMPUTE GRID DISTANCES, MULTIPLY GROUND LEVEL DISTANCES BY THE AVERAGE COMBINED SCALE FACTOR OF 0.999494.

- CLS STANDARD POST FOUND SHOWN THUS [Symbol]
- CLS '77 POST FOUND SHOWN THUS [Symbol]
- CLS '77 POST PLACED SHOWN THUS [Symbol]
- 20 cm SPIKE PLACED SHOWN THUS [Symbol]
- GCP CONTROL STATION SHOWN THUS [Symbol]
- TOPOGRAPHIC TIES SHOWN THUS [Symbol]
- GUY LINE AND ANCHOR SHOWN THUS [Symbol]
- POWER POLE SHOWN THUS [Symbol]
- LANDS DEALT WITH BY THIS PLAN BOUNDED THUS [Symbol]
- BUILDING SHOWN THUS [Symbol]
- OVERHEAD POWERLINE SHOWN THUS [Symbol]
- TIES SHOWN THUS [Symbol]

UTRM DENOTES UNABLE TO READ MARKINGS.  
CTFN DENOTES CARCROSS / TAGISH FIRST NATION

POSTS PLACED ARE MARKED WITH '2021' FOR THE YEAR OF THE SURVEY.

ALL PLACED MONUMENTS ARE MARKED WITH 0.05m X 0.05m X 0.60m LONG WOODEN MARKERS, UNLESS OTHERWISE NOTED. THESE MARKERS ARE PLACED 0.30m FROM THE MONUMENTS.

ALL BOUNDARIES HAVE BEEN CUT AND BLAZED AS PART OF THIS SURVEY, EXCEPT ROAD BOUNDARIES.