

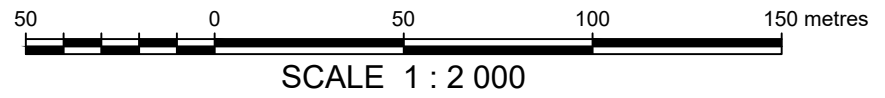
SKETCH OF PROPOSED LOTS

WITHIN LOT 1143 QUAD 105 D/2 CTFN C-17B
(PLAN 100362 CLSR, 2012-0087 LTO)

LOT 1147 QUAD 105 D/2 CTFN C-37B
(PLAN 100362 CLSR, 2012-0087 LTO)

LOTS 21 TO 31 AND 1157 CHOOUTLA
SUBDIVISION CTFN C-38B
(PLAN 69576 CLSR, 74408 LTO)

CARCROSS/TAGISH FIRST NATION
YUKON

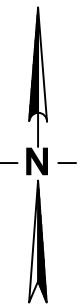


LEGEND

BEARINGS ARE UTM GRID AND ARE DERIVED FROM CADASTRAL DATA PROVIDED BY NATURAL RESOURCES CANADA.

DISTANCES ARE HORIZONTAL AT GROUND LEVEL AND ARE EXPRESSED IN METERS.

LANDS DEALT WITH BY THIS SKETCH SHOWN THUS ———



AREA TABLE	
Lot No.	Area (ha.)
1	0.378 ha.
2	0.350 ha.
3	0.335 ha.
4	0.233 ha.
5	0.232 ha.
6	0.193 ha.
7	0.375 ha.
8	0.297 ha.
9	0.391 ha.
10	0.288 ha.
11	0.205 ha.
12	0.145 ha.
13	0.158 ha.
14	0.172 ha.
15	0.221 ha.
16	0.284 ha.
17	0.464 ha.
18	0.421 ha.
19	0.270 ha.
20	0.387 ha.
21	0.564 ha.
22	0.403 ha.
23	0.604 ha.
24	0.336 ha.
25	0.311 ha.
26	0.488 ha.
27	0.368 ha.
28	0.605 ha.
29	0.520 ha.
30	0.402 ha.
31	0.441 ha.
TOTAL	10.8 ha.

SUBJECT TO THE LIMITATIONS HEREON:

1. THIS SKETCH IS NOT TO BE USED TO DEFINE PROPERTY BOUNDARIES.