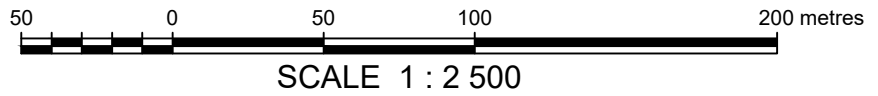


SKETCH OF PROPOSED LOTS

WITHIN LOTS 1 TO 20 CHOOUTLA
SUBDIVISION CTFN C-23B
(PLAN 69576 CLSR, 74408 LTO)

CARCROSS/TAGISH FIRST NATION
YUKON

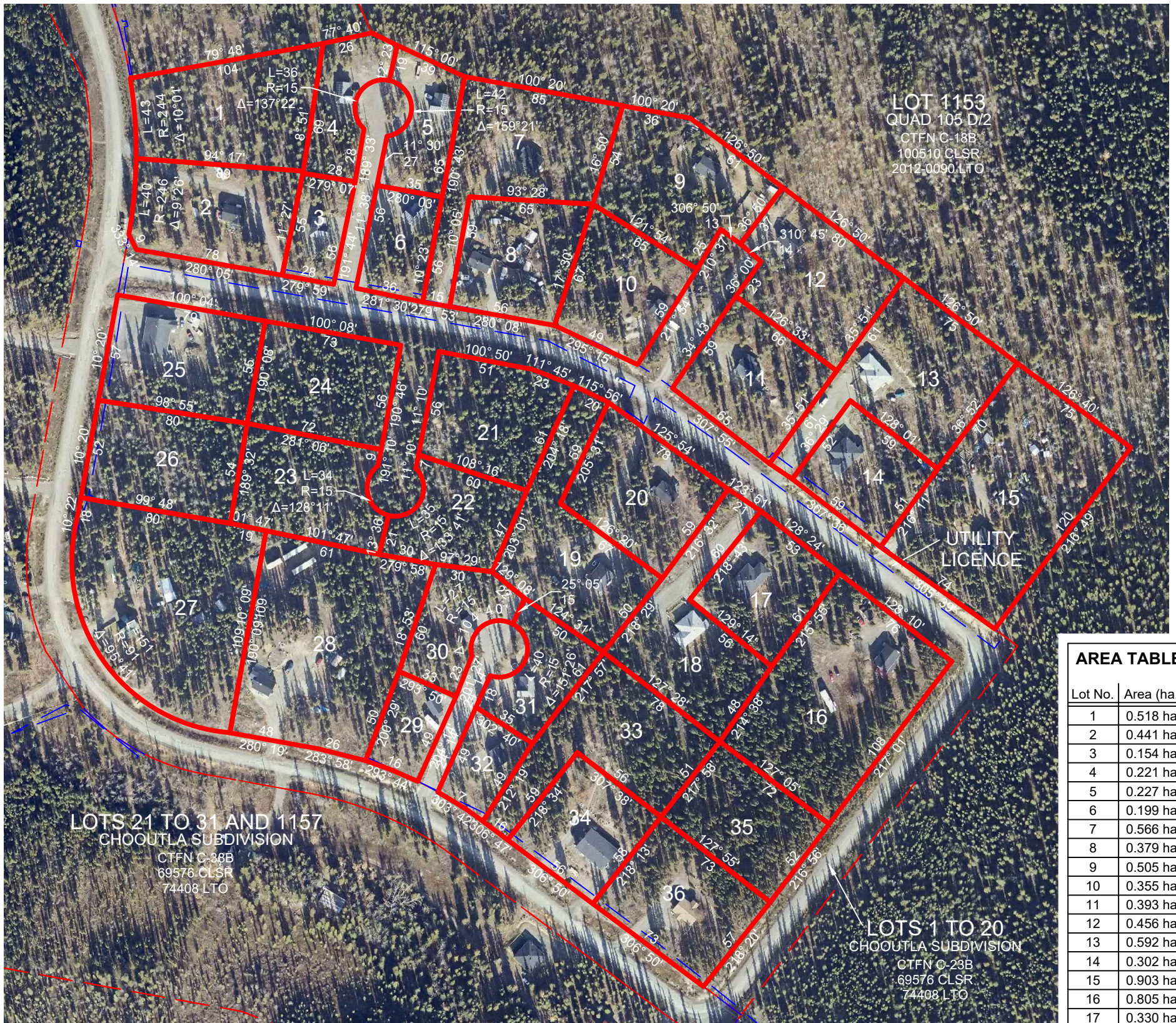


LEGEND

BEARINGS ARE UTM GRID AND ARE DERIVED FROM CADASTRAL DATA PROVIDED BY NATURAL RESOURCES CANADA.

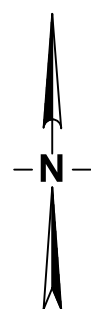
DISTANCES ARE HORIZONTAL AT GROUND LEVEL AND ARE EXPRESSED IN METERS.

LANDS DEALT WITH BY THIS SKETCH SHOWN THUS _____



AREA TABLE

Lot No.	Area (ha.)
1	0.518 ha.
2	0.441 ha.
3	0.154 ha.
4	0.221 ha.
5	0.227 ha.
6	0.199 ha.
7	0.566 ha.
8	0.379 ha.
9	0.505 ha.
10	0.355 ha.
11	0.393 ha.
12	0.456 ha.
13	0.592 ha.
14	0.302 ha.
15	0.903 ha.
16	0.805 ha.
17	0.330 ha.
18	0.490 ha.
19	0.517 ha.
20	0.424 ha.
21	0.399 ha.
22	0.291 ha.
23	0.405 ha.
24	0.404 ha.
25	0.443 ha.
26	0.424 ha.
27	0.913 ha.
28	0.893 ha.
29	0.155 ha.
30	0.246 ha.
31	0.234 ha.
32	0.155 ha.
33	0.508 ha.
34	0.329 ha.
35	0.373 ha.
36	0.422 ha.
TOTAL	15.4 ha.



SUBJECT TO THE LIMITATIONS HEREON:

1. THIS SKETCH IS NOT TO BE USED TO DEFINE PROPERTY BOUNDARIES.