

UTM COORDINATES, NAD 83-CSR5 (EPOCH 2002) ZONE 8, CENTRAL MERIDIAN 135° WEST					
POINT #	NORTHING	EASTING	ELEVATION	CSF	ACCURACY
GCP 1385	6716943.756	507186.527	756.561	0.999482	0.01
GCP 1384	6716877.78	507324.68	753.72	0.999483	0.02

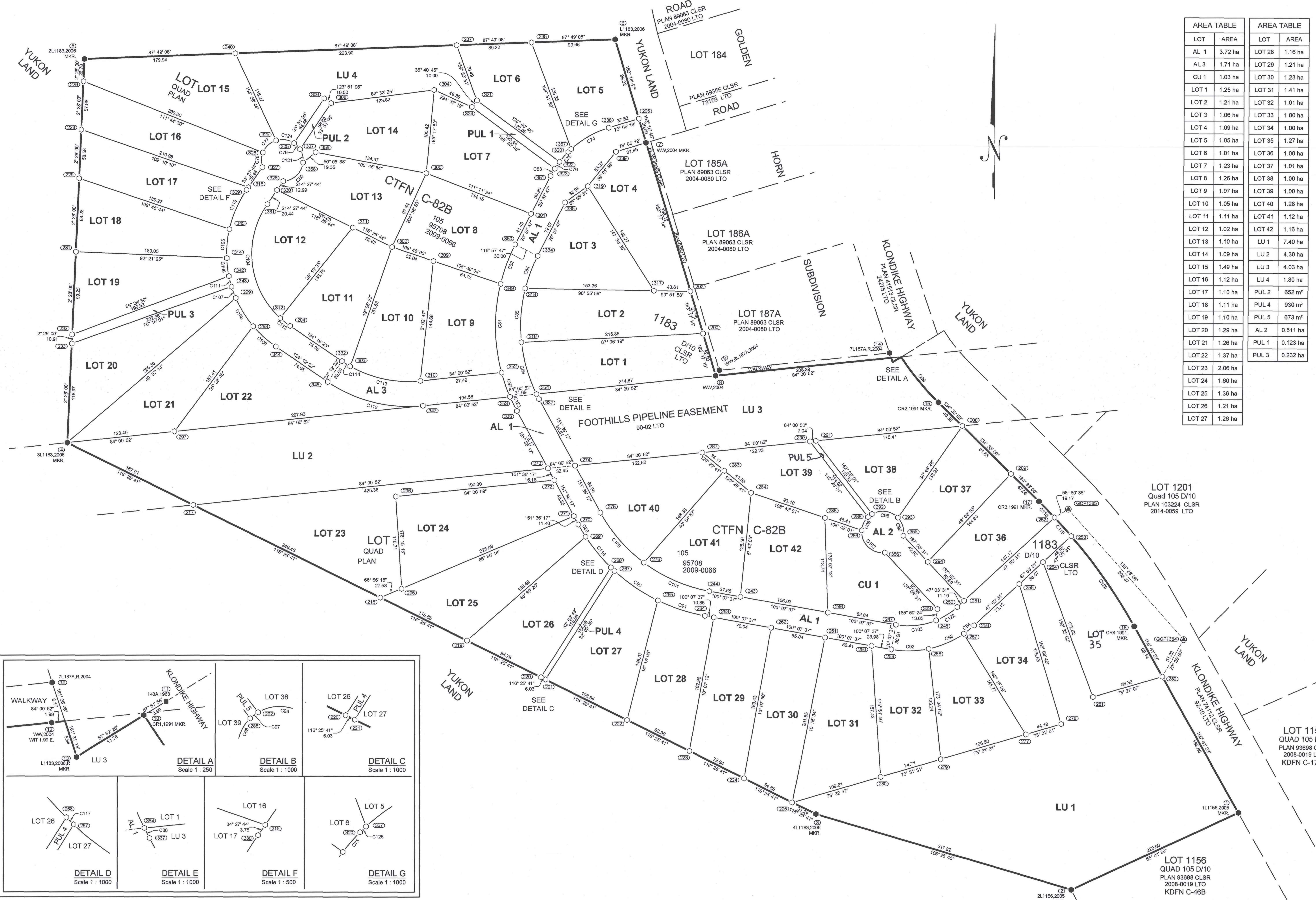
CURVE TABLE				
CURVE #	LENGTH	RADIUS	CHORD AZIMUTH	CHORD LENGTH
C74	51.79	115.00	60°14'07"	51.36
C75	15.74	115.00	40°55'08"	15.73
C76	10.01	115.00	34°30'14"	10.01
C77	22.14	25.00	47°31'41"	21.42
C78	18.00	25.00	181°31'41"	17.82
C79	10.30	25.00	135°49'48"	10.22
C80	35.46	25.00	46°31'08"	32.56
C81	107.58	215.00	359°11'23"	106.46
C82	50.43	215.00	20°14'37"	50.31
C83	10.13	115.00	29°29'12"	10.13
C84	41.78	185.00	20°29'35"	41.69
C85	65.16	185.00	3°58'01"	64.82
C86	65.04	185.00	163°46'20"	64.70
C87	30.85	215.00	160°44'40"	30.82
C88	6.77	185.00	152°39'10"	6.77
C89	17.14	215.00	149°19'16"	17.13
C90	62.75	215.00	124°18'17"	62.52
C91	59.35	215.00	108°02'08"	59.16
C92	44.76	115.00	88°58'34"	44.48
C93	45.69	115.00	66°26'39"	45.39
C94	16.07	115.00	51°03'39"	16.05
C95	23.49	25.00	163°16'12"	22.84
C96	33.59	25.00	97°51'25"	31.12
C97	6.02	25.00	52°28'01"	6.00
C98	17.96	25.00	24°59'08"	17.58
C99	70.29	330.00	140°37'21"	70.16
C100	79.96	185.00	139°13'22"	79.34
C101	86.29	185.00	113°29'02"	85.48
C102	43.84	25.00	134°09'51"	38.43
C103	48.95	85.00	83°37'42"	48.28
C104	150.18	105.00	173°29'19"	137.70
C105	34.96	135.00	5°08'15"	34.87
C106	21.76	135.00	173°05'59"	21.74
C107	14.51	135.00	159°50'45"	14.50
C108	39.88	135.00	148°18'12"	39.74
C109	36.56	135.00	132°04'53"	36.45
C110	51.61	135.00	23°30'35"	51.30
C111	13.09	135.00	165°42'11"	13.09
C112	15.01	105.00	128°25'09"	15.00
C113	86.77	140.00	101°48'09"	85.38
C114	11.73	140.00	121°55'24"	11.72
C115	119.60	170.00	104°10'08"	117.15
C116	47.81	215.00	320°40'02"	47.71
C117	6.12	215.00	313°28'52"	6.12
C118	26.75	670.00	135°41'43"	26.75
C119	30.01	670.00	138°07'19"	30.01
C120	132.10	670.00	145°03'12"	131.88
C121	16.69	25.00	166°45'20"	16.38
C122	29.78	85.00	57°05'39"	29.62
C123	18.87	215.00	154°07'09"	18.87
C124	22.31	25.00	278°27'54"	21.58
C125	5.00	115.00	226°05'11"	5.00

UTM COORDINATES, NAD 83-CSR5 (EPOCH 2002) ZONE 8, CENTRAL MERIDIAN 135° WEST			UTM COORDINATES, NAD 83-CSR5 (EPOCH 2002) ZONE 8, CENTRAL MERIDIAN 135° WEST			UTM COORDINATES, NAD 83-CSR5 (EPOCH 2002) ZONE 8, CENTRAL MERIDIAN 135° WEST		
POINT #	NORTHING	EASTING	POINT #	NORTHING	EASTING	POINT #	NORTHING	EASTING
1	6716580.35	507390.90	254	6716880.17	507156.47	306	6717434.70	506298.38
2	6716487.53	507191.57	255	6716853.92	507128.28	307	6717373.65	506269.60
3	6716577.46	506886.91	256	6716804.13	507074.76	308	6717426.13	506306.68
4	6717021.81	505992.86	257	6716794.05	507062.28	309	6717239.86	506426.77
5	6717481.90	506012.70	258	6716775.92	507020.70	310	6717096.06	506413.54
6	6717505.97	506844.64	259	6716775.12	506976.25	311	6717280.02	506332.44
7	6717382.18	506881.82	260	6716779.34	506952.66	312	6717171.22	506246.44
8	6717102.84	506765.70	261	6716789.25	506987.15	314	6717243.20	506182.53
9	6717109.34	506770.01	262	6716800.68	506933.16	315	6717328.02	506208.23
10	6717125.68	506896.58	263	6716812.99	506874.25	316	6717142.54	506534.03
11	6717127.76	506899.88	264	6716814.90	506853.57	317	6717204.68	506991.74
12	6717124.56	506972.84	265	6716833.20	506897.74	318	6717207.17	506538.48
13	6717119.42	506976.61	267	6716868.42	506845.72	319	6717329.86	506612.42
14	6717130.58	506972.89	268	6716872.63	506841.28	320	6717371.04	506589.15
15	6717071.48	507031.07	269	6716909.52	506811.06	321	6717432.63	506480.22
17	6716952.97	507151.46	270	6716924.25	506802.32	322	6717359.16	506578.86
18	6716803.46	507265.65	271	6716934.27	506856.90	323	6717350.91	506573.19
200	6717153.48	506750.49	272	6716977.22	506573.88	324	6717424.61	506474.25
202	6717204.02	506735.32	273	6716991.45	506565.99	325	6717384.35	506241.15
204	6717161.91	506258.18	274	6716994.83	506598.25	326	6717369.89	506225.35
205	6717410.90	506873.20	275	6716938.50	506828.70	327	6717352.29	506224.89
208	6717043.22	507059.78	276	6716878.46	506860.49	328	6717335.51	506249.74
209	6716985.97	507117.93	277	6716873.48	507136.73	329	6717324.93	506206.11
217	6716947.11	506143.16	278	6716866.00	507179.08	330	6717324.81	506242.39
218	6716836.15	506366.43	279	6716843.58	507035.62	331	6717307.96	506230.83
219	6716784.70	506469.95	280	6716822.40	506964.01	332	6717119.67	506320.05
220	6716740.76	506558.35	281	6716716.61	507216.72	333	6716823.57	507030.88
221	6716738.08	506563.75	282	6716743.21	507299.48	334	6717246.21	506553.07
222	6716686.75	506660.99	283	6716689.01	506876.31	335	6717310.41	506585.73
223	6716652.65	506735.63	284	6716662.61	506806.34	336	6717060.18	506526.84
224	6716620.21	506800.91	285	6716632.78	506896.48	337	6717074.44	506555.21
225	6716591.38	506858.95	286	6716617.91	506940.42	338	6717399.99	506637.32
226	6717455.16	506011.55	287	6717010.74	506749.95	339	6717371.29	506646.01
228	6717397.26	506009.05	288	6716933.83	506947.84	342	6717221.63	506185.14
229	6717338.76	506006.53	290	6717024.20	506878.41	343	6717208.96	506188.37
231	6717250.60	506002.73	291	6717024.94	506885.42	344	6717137.14	506241.27
232	6717151.50	505998.46	292	6716937.49	506952.60	345	6717277.91	506185.65
233	6717140.80	505998.00	293	6716933.24	506983.41	346	6717094.90	506303.14
235	6717502.18	506545.10	294	6716880.17	507019.15	347	6717066.24	506416.67
237	6717498.79	506456.00	295	6716846.93	506931.75	349	6717212.62	506508.94
240	6717486.75	506192.42	296	6716957.34	506834.52	350	6717259.80	506526.34
243	6716837.80	506795.88	297	6717035.19	506120.52	351	6717342.10	506568.21
244	6716844.41	506758.84	298	6717161.56	506214.24	352	6717106.22	506510.45
246	6716819.16	506900.21	299	6717195.35	506193.37	353	6717077.14	506520.61
247	6716804.84	506991.52	300	6717345.23	506420.13	354	6717090.44	506552.11
248	6716810.00	507029.47	301	6717296.76	506545.14	355	6716911.57	506989.93
250	6716826.08	507054.33	302	6717256.60	506379.53	356	6716891.14	506967.97
251	6716833.64	507062.45	303	6717113.47	506329.96	357	6717374.50	506592.76
252	6716933.84	507170.13	304	6717445.16	506429.40	358	6717357.91	506273.35
253	6716911.51	507190.15	305	6717381.17	506262.48	359	6717370.31	506288.19

COORDINATES WERE DERIVED FROM GNSS OBSERVATIONS HOLDING STATION GCP1385 FIXED.
 THE COORDINATES AND ACCURACY OF GCP 1385 WERE DERIVED FROM THE NATIONAL RESOURCES CANADA PRECISE POINT POSITIONING (PPP) SERVICE.
 THE PUBLISHED ESTIMATED ABSOLUTE HORIZONTAL ACCURACIES ARE AT THE 95% CONFIDENCE LEVEL.
 ELEVATIONS ARE ELLIPSOIDAL.
 CSF STANDS FOR COMBINED SCALE FACTOR.

CHALLENGER Geomatics Ltd.
 Whitehorse (867) 988-6940
 Calgary (403) 253-9101
 Edmonton (780) 424-5511
 Fort McMurray (780) 783-8897
 Drayton Valley (780) 515-8440

DWG. No. **18-S-37408**



AREA TABLE		AREA TABLE	
LOT	AREA	LOT	AREA
AL 1	3.72 ha	LOT 28	1.16 ha
AL 3	1.71 ha	LOT 29	1.21 ha
CU 1	1.03 ha	LOT 30	1.23 ha
LOT 1	1.25 ha	LOT 31	1.41 ha
LOT 2	1.21 ha	LOT 32	1.01 ha
LOT 3	1.06 ha	LOT 33	1.00 ha
LOT 4	1.09 ha	LOT 34	1.00 ha
LOT 5	1.05 ha	LOT 35	1.27 ha
LOT 6	1.01 ha	LOT 36	1.00 ha
LOT 7	1.23 ha	LOT 37	1.01 ha
LOT 8	1.26 ha	LOT 38	1.00 ha
LOT 9	1.07 ha	LOT 39	1.00 ha
LOT 10	1.05 ha	LOT 40	1.28 ha
LOT 11	1.11 ha	LOT 41	1.12 ha
LOT 12	1.02 ha	LOT 42	1.16 ha
LOT 13	1.10 ha	LU 1	7.40 ha
LOT 14	1.09 ha	LU 2	4.30 ha
LOT 15	1.49 ha	LU 3	4.03 ha
LOT 16	1.12 ha	LU 4	1.80 ha
LOT 17	1.10 ha	PUL 2	652 m²
LOT 18	1.11 ha	PUL 4	930 m²
LOT 19	1.10 ha	PUL 5	673 m²
LOT 20	1.29 ha	AL 2	0.511 ha
LOT 21	1.26 ha	PUL 1	0.123 ha
LOT 22	1.37 ha	PUL 3	0.232 ha
LOT 23	2.06 ha		
LOT 24	1.60 ha		
LOT 25	1.36 ha		
LOT 26	1.21 ha		
LOT 27	1.26 ha		

PLAN OF SURVEY OF
LOTS 1 TO 42, LIMITED USE LOTS 1 TO 4, COMMUNITY LOT 1, PUBLIC UTILITY LOTS 1 TO 5 AND ACCESS LOTS 1 TO 3

WITHIN LOT 1183 QUAD 105D/10 CARCROSS / TAGISH FIRST NATION SETTLEMENT LAND SELECTION C-82B PLAN 95708 CLSR , 2009-0066 LTO

YUKON
 SCALE 1:2,000
 THE PLOT SIZE THAT WILL PROVIDE TRUE SCALE AND OPTIMUM READABILITY FOR THIS PLAN IS 600MM X 1500MM.
 THIS SURVEY WAS EXECUTED DURING THE PERIOD SEPTEMBER 4, 2018 TO OCTOBER 18, 2018 BY PAUL A. BURBIDGE, CLS.

LEGEND
 BEARINGS ARE UTM GRID, DERIVED FROM GNSS OBSERVATIONS AND ARE REFERRED TO THE CENTRAL MERIDIAN OF UTM ZONE 8 (135° WEST LONGITUDE).
 THIS PLAN SHOWS HORIZONTAL GROUND LEVEL DISTANCES IN METRES AND DECIMALS THEREOF. TO COMPUTE GRID DISTANCES, MULTIPLY GROUND LEVEL DISTANCES BY THE AVERAGE COMBINED SCALE FACTOR OF 0.999482.
 CLS STANDARD POST FOUND SHOWN THUS
 OLD PATTERN IRON POST FOUND SHOWN THUS
 CLS '69 POST FOUND SHOWN THUS
 CLS '77 POST FOUND SHOWN THUS
 CLS '77 POST PLACED SHOWN THUS
 20CM SPIKE PLACED SHOWN THUS
 GCP CONTROL STATION SHOWN THUS
 TOPOGRAPHIC TIES SHOWN THUS
 LANDS DEALT WITH BY THIS PLAN BOUNDED THUS
 TIES SHOWN THUS
 POSTS PLACED ARE MARKED WITH UNIQUE IDENTIFIER AND "2018" FOR THE YEAR OF THE SURVEY.
 ALL PLACED MONUMENTS ARE MARKED WITH 0.05M X 0.05M X 0.60M LONG WOODEN MARKERS, UNLESS OTHERWISE NOTED. THESE MARKERS ARE PLACED 0.30M FROM THE MONUMENTS.
 CTFN DENOTES CARCROSS / TAGISH FIRST NATION.
 KDFN DENOTES KWANLIN DUN FIRST NATION.
 UTRM DENOTES UNABLE TO READ MARKINGS.
 C.S. DENOTES COUNTERSUNK POST.
 LU DENOTES LIMITED USE LOT.
 PUL DENOTES PUBLIC UTILITY LOT.
 AL DENOTES ACCESS LOT.
 CU DENOTES COMMUNITY LOT.
 ALL BOUNDARIES HAVE BEEN CUT AND BLAZED AS PART OF THIS SURVEY, EXCEPTING FOR ROAD BOUNDARIES.

Re: Section 38, CANADA LANDS SURVEYORS REGULATIONS
 CERTIFIED CORRECT:
 ON THE 6 DAY OF November, 2018
 PAUL A. BURBIDGE, Canada Lands Surveyor

