

UTM COORDINATES
NAD83-CSRS (EPOCH 2002) ZONE 8
CENTRAL MERIDIAN 135° WEST

POINT	NORTHING	EASTING	ELEVATION	CSF	ACCURACY
1781	6667835.459	532421.164	662.052	0.999509	0.03
1775	6667896.35	532508.82	662.17	0.999509	0.04
200	6667914.52	532507.34			
203	6668243.81	532495.85			
204	6667862.14	532425.19			
206	6667951.11	532386.39			
207	6668003.42	532504.24			

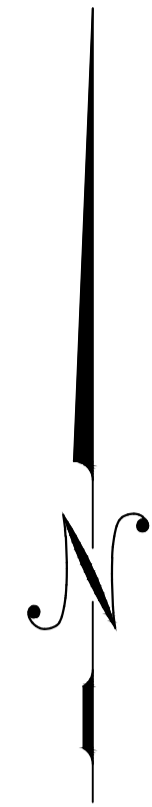
COORDINATES WERE DERIVED FROM GNSS OBSERVATIONS HOLDING STATION GCP1781 FIXED.

THE COORDINATES AND ACCURACY OF GCP1781 WERE DERIVED FROM THE NATURAL RESOURCES CANADA PRECISE POINT POSITIONING (PPP) SERVICE.

THE PUBLISHED ESTIMATED ABSOLUTE HORIZONTAL ACCURACIES ARE AT THE 95% CONFIDENCE LEVEL.

ELEVATIONS ARE ELLIPSOIDAL.

CSF STANDS FOR COMBINED SCALE FACTOR.

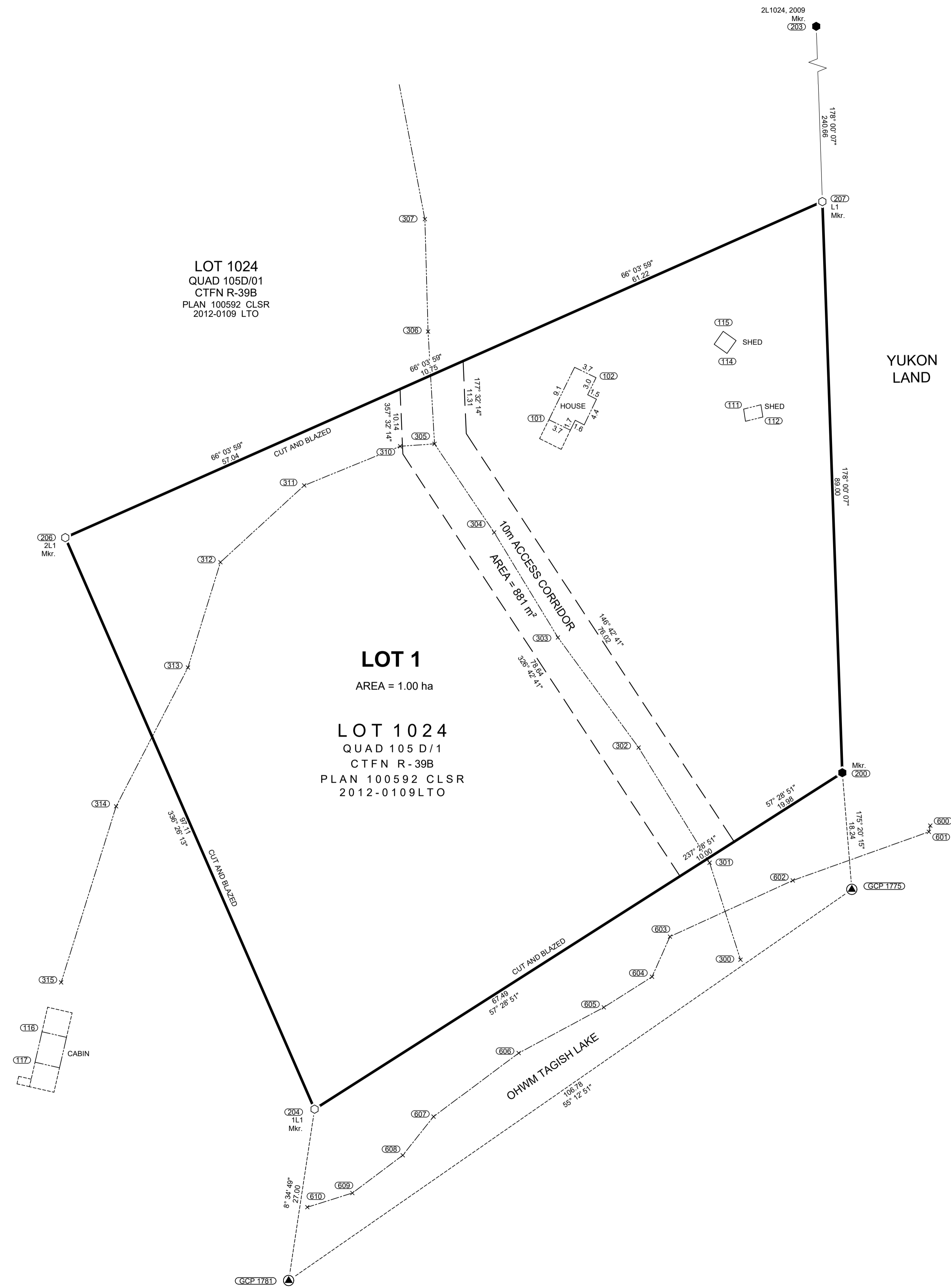


TIES TO FEATURES
UTM COORDINATES
NAD 83-CSRS (EPOCH 2002) ZONE 8
CENTRAL MERIDIAN 135° WEST

POINT	NORTHING	EASTING	DESCRIPTION
101	6667969.5	532461.7	BUILDING
102	6667976.0	532469.0	BUILDING
111	6667971.1	532492.0	SHED
112	6667969.9	532495.0	SHED
114	6667979.8	532489.4	SHED
115	6667983.2	532488.8	SHED
116	6667874.2	532382.8	BUILDING
117	6667869.5	532381.7	BUILDING
300	6667885.4	532491.5	CENTERLINE ACCESS
301	6667900.5	532486.7	CENTERLINE ACCESS
302	6667918.4	532475.6	CENTERLINE ACCESS
303	6667935.6	532463.1	CENTERLINE ACCESS
304	6667951.9	532453.1	CENTERLINE ACCESS
305	6667965.7	532443.9	CENTERLINE ACCESS
306	6667983.2	532442.9	CENTERLINE ACCESS
307	6668000.7	532442.4	CENTERLINE ACCESS
310	6667965.3	532438.5	CENTERLINE ACCESS
311	6667959.2	532423.6	CENTERLINE ACCESS
312	6667947.3	532410.5	CENTERLINE ACCESS
313	6667930.9	532405.5	CENTERLINE ACCESS

TIES TO FEATURES
UTM COORDINATES
NAD 83-CSRS (EPOCH 2002) ZONE 8
CENTRAL MERIDIAN 135° WEST

POINT	NORTHING	EASTING	DESCRIPTION
314	6667909.3	532394.3	CENTERLINE ACCESS
315	6667881.9	532385.7	CENTERLINE ACCESS
600	6667906.3	532521.0	OHWM
601	6667905.3	532520.8	OHWM
602	6667897.7	532499.6	OHWM
603	6667889.0	532480.5	OHWM
604	6667882.8	532477.7	OHWM
605	6667878.0	532470.2	OHWM
606	6667870.9	532457.0	OHWM
607	6667861.0	532443.7	OHWM
608	6667855.0	532438.9	OHWM
609	6667849.1	532431.1	OHWM
610	6667846.9	532424.1	OHWM



PLAN OF SURVEY OF

LOT 1

WITHIN LOT 1024, QUAD 105 D/1,
CARCROSS/ TAGISH FIRST NATION SETTLEMENT LAND SELECTION R-39B
PLAN 100592 CLSR, 2012-0109 LTO

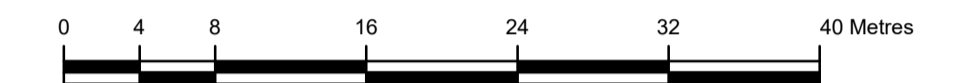
AND EXPLANATORY PLAN OF

ACCESS CORRIDOR WITHIN LOT 1

WITHIN LOT 1024, QUAD 105 D/1,
CARCROSS/ TAGISH FIRST NATION SETTLEMENT LAND SELECTION R-39B
PLAN 100592 CLSR, 2012-0109 LTO

YUKON

SCALE 1 : 400



THE PLOT SIZE THAT WILL PROVIDE TRUE SCALE AND OPTIMUM READABILITY FOR THIS PLAN IS 609 mm X 1000 mm.

THIS SURVEY WAS EXECUTED DURING THE PERIOD JUNE 6, 2021 TO JUNE 18, 2021 BY PAUL A. BURBIDGE, CLS.

LEGEND

BEARINGS ARE UTM GRID, DERIVED FROM GNSS OBSERVATIONS AND ARE REFERRED TO THE CENTRAL MERIDIAN OF UTM ZONE 8 (135° WEST LONGITUDE).

THIS PLAN SHOWS HORIZONTAL GROUND LEVEL DISTANCES IN METRES AND DECIMALS THEREOF. TO COMPUTE GRID DISTANCES, MULTIPLY GROUND LEVEL DISTANCES BY THE AVERAGE COMBINED SCALE FACTOR OF 0.999508.

- CLS '77 POST FOUND SHOWN THUS
- CLS '77 POST PLACED SHOWN THUS
- 20 cm SPIKE PLACED SHOWN THUS
- GCP CONTROL STATION SHOWN THUS
- TOPOGRAPHIC TIES SHOWN THUS

- LANDS DEALT WITH BY THIS PLAN BOUNDED THUS
- BUILDING SHOWN THUS
- DECKS SHOWN THUS
- CENTERLINE ACCESS SHOWN THUS
- TIES SHOWN THUS

UTM DENOTES UNABLE TO READ MARKINGS.
CTFN DENOTES CARCROSS / TAGISH FIRST NATION
POSTS PLACED ARE MARKED WITH "2021" FOR THE YEAR OF THE SURVEY.
ALL PLACED MONUMENTS ARE MARKED WITH 0.05m X 0.05m X 0.60m LONG WOODEN MARKERS, UNLESS OTHERWISE NOTED. THESE MARKERS ARE PLACED 0.30m FROM THE MONUMENTS.
ALL NEW BOUNDARIES HAVE BEEN CUT AND BLAZED AS PART OF THIS SURVEY.