

UTM COORDINATES NAD83-CSRS (EPOCH 2002) ZONE 8 CENTRAL MERIDIAN 135° WEST					
POINT	NORTHING	EASTING	ELEVATION	CSF	ACCURACY
GCP1008	6682964.743	513879.094	739.891	0.999487	0.05
GCP1007	6683022.89	513851.49	739.57	0.999487	0.05
1	6682930.12	513903.95			
2	6682928.17	513904.71			
3	6683012.56	513769.51			
5	6682911.17	513897.54			
6	6683043.32	513835.51			
7	6682911.17	513810.75			
301	6682928.20	513904.83			
302	6682872.65	513923.80			
303	6682965.90	513888.51			
304	6683118.88	513817.21			
305	6682962.41	513682.25			
306	6682796.94	513756.85			
1010	6683102.52	513782.34			
1011	6683002.67	513768.10			

COORDINATES WERE DERIVED FROM GNSS OBSERVATIONS HOLDING STATION GCP1008 FIXED.

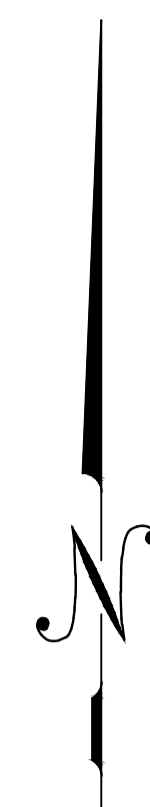
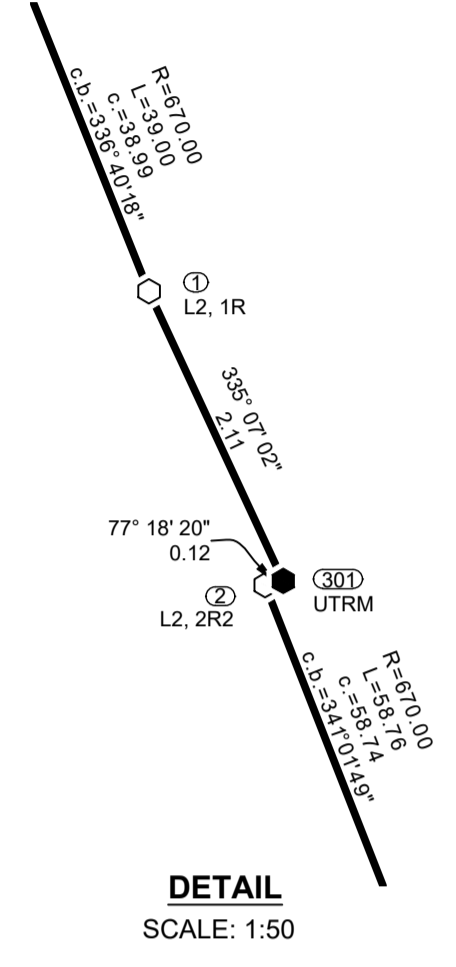
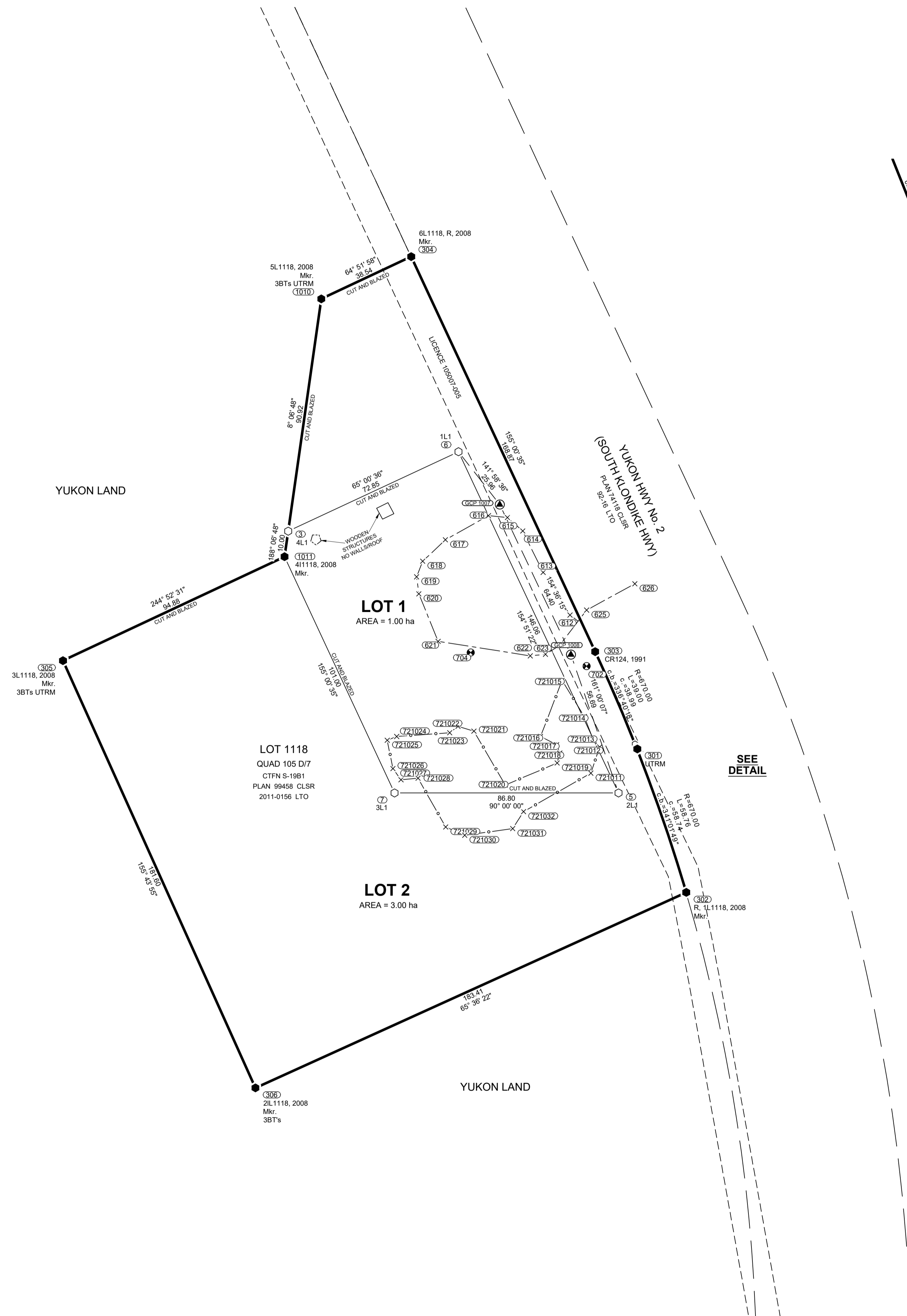
THE COORDINATES AND ACCURACY OF GCP1008 WERE DERIVED FROM THE NATURAL RESOURCES CANADA PRECISE POINT POSITIONING (PPP) SERVICE.

THE PUBLISHED ESTIMATED ABSOLUTE HORIZONTAL ACCURACIES ARE AT THE 95% CONFIDENCE LEVEL.

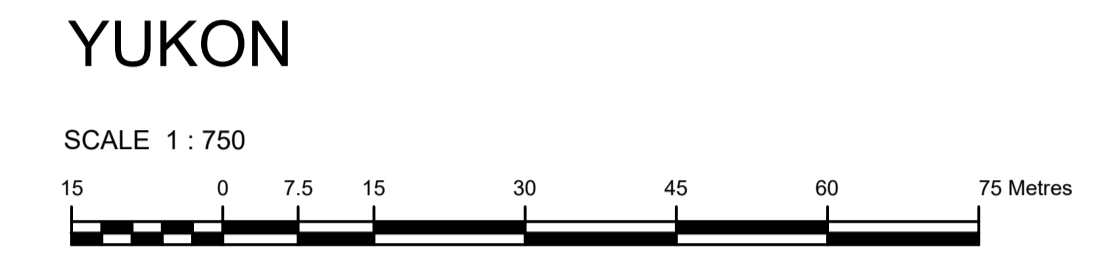
ELEVATIONS ARE ELLIPSOIDAL.

CSF STANDS FOR COMBINED SCALE FACTOR.

TIES TO FEATURES UTM COORDINATES NAD 83-CSRS (EPOCH 2002) ZONE 8 CENTRAL MERIDIAN 135° WEST			
POINT	NORTHING	EASTING	DESCRIPTION
612	6682980.1	513878.8	CENTERLINE ACCESS
613	6682996.6	513868.3	CENTERLINE ACCESS
614	6683012.6	513860.4	CENTERLINE ACCESS
615	6683017.8	513854.5	CENTERLINE ACCESS
616	6683018.6	513847.1	CENTERLINE ACCESS
617	6683009.2	513830.4	CENTERLINE ACCESS
618	6683000.9	513821.7	CENTERLINE ACCESS
619	6682994.9	513819.3	CENTERLINE ACCESS
620	6682988.3	513820.2	CENTERLINE ACCESS
621	6682969.9	513827.6	CENTERLINE ACCESS
622	6682964.3	513863.4	CENTERLINE ACCESS
623	6682964.9	513869.2	CENTERLINE ACCESS
625	6682982.0	513885.2	CENTERLINE ACCESS
626	6682992.2	513903.9	CENTERLINE ACCESS
702	6682960.3	513885.1	POWER POLE
704	6682965.5	513840.2	POWER POLE
721011	6682918.8	513886.8	FENCE
721012	6682929.0	513890.2	FENCE
721013	6682932.1	513887.6	FENCE
721014	6682940.8	513884.3	FENCE
721015	6682954.7	513875.7	FENCE
721016	6682933.0	513867.3	FENCE
721017	6682929.8	513873.5	FENCE
721018	6682926.6	513874.8	FENCE
721019	6682922.8	513873.8	FENCE
721020	6682914.2	513853.7	FENCE
721021	6682935.1	513841.5	FENCE
721022	6682937.0	513835.3	FENCE
721023	6682934.5	513832.1	FENCE
721024	6682933.0	513811.6	FENCE
721025	6682931.6	513807.9	FENCE
721026	6682920.6	513810.1	FENCE
721027	6682916.3	513813.2	FENCE
721028	6682916.9	513819.9	FENCE
721029	6682898.0	513830.5	FENCE
721030	6682894.8	513837.9	FENCE
721031	6682897.4	513856.5	FENCE
721032	6682903.9	513860.8	FENCE



PLAN OF SURVEY OF  
**LOTS 1 AND 2**  
WITHIN LOT 1118, QUAD 105 D/7  
CARCROSS/ TAGISH FIRST NATION SETTLEMENT LAND SELECTION S-19B1  
PLAN 99458 CLSR, 2011-0156 LTO



THE PLOT SIZE THAT WILL PROVIDE TRUE SCALE AND OPTIMUM READABILITY FOR THIS PLAN IS 609 mm X 1000 mm.

THIS SURVEY WAS EXECUTED DURING THE PERIOD JUNE 3, 2021 TO JULY 21, 2021 BY PAUL A. BURBIDGE, CLS.

- LEGEND**
- BEARINGS ARE UTM GRID, DERIVED FROM GNSS OBSERVATIONS AND ARE REFERRED TO THE CENTRAL MERIDIAN OF UTM ZONE 8 (135° WEST LONGITUDE).
- THIS PLAN SHOWS HORIZONTAL GROUND LEVEL DISTANCES IN METRES AND DECIMALS THEREOF. TO COMPUTE GRID DISTANCES, MULTIPLY GROUND LEVEL DISTANCES BY THE AVERAGE COMBINED SCALE FACTOR OF 0.999487.
- CLS 77 POST FOUND SHOWN THUS . . . . . ●
  - CLS 77 POST PLACED SHOWN THUS . . . . . ○
  - 20 cm SPIKE PLACED SHOWN THUS . . . . . ▲
  - GCP CONTROL STATION SHOWN THUS . . . . . GCP
  - TOPOGRAPHIC TIES SHOWN THUS . . . . . x
  - POWER POLE SHOWN THUS . . . . . ⚡
  - LANDS DEALT WITH BY THIS PLAN BOUNDED THUS . . . . . ———
  - WOODEN STRUCTURES SHOWN THUS . . . . . - - - - -
  - CENTERLINE ACCESS SHOWN THUS . . . . . - - - - -
  - TIES SHOWN THUS . . . . . - - - - -
  - FENCELINE SHOWN THUS . . . . . - - - - -
  - UTRM DENOTES UNABLE TO READ MARKINGS.
  - CTFN DENOTES CARCROSS / TAGISH FIRST NATION
  - POSTS PLACED ARE MARKED WITH "2021" FOR THE YEAR OF THE SURVEY.
  - ALL PLACED MONUMENTS ARE MARKED WITH 0.05m X 0.05m X 0.60m LONG WOODEN MARKERS, UNLESS OTHERWISE NOTED. THESE MARKERS ARE PLACED 0.30m FROM THE MONUMENTS.
  - ALL BOUNDARIES ARE OPEN UNLESS OTHERWISE NOTED ON PLAN.