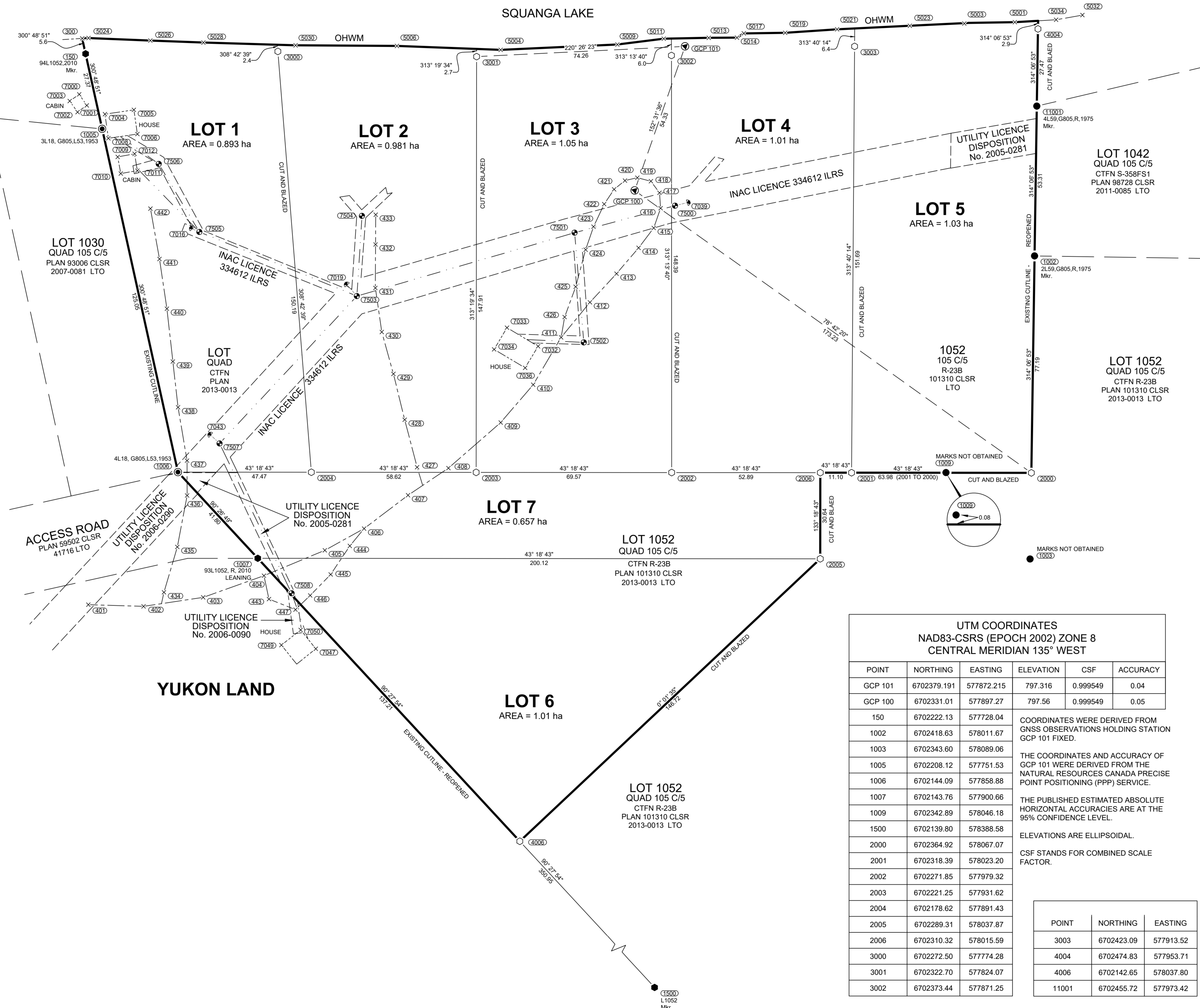


TIES TO FEATURES UTM COORDINATES NAD 83-CSRS (EPOCH 2002) ZONE 8 CENTRAL MERIDIAN 135° WEST			
POINT	NORTHING	EASTING	DESCRIPTION
300	6702225.0	577723.2	OHWM
400	6702069.1	577846.2	CENTERLINE ACCESS
401	6702088.6	577871.4	CENTERLINE ACCESS
402	6702102.5	577885.3	CENTERLINE ACCESS
403	6702120.1	577897.5	CENTERLINE ACCESS
404	6702141.1	577906.7	CENTERLINE ACCESS
405	6702163.1	577914.9	CENTERLINE ACCESS
406	6702178.5	577918.9	CENTERLINE ACCESS
407	6702198.0	577920.9	CENTERLINE ACCESS
408	6702215.1	577923.8	CENTERLINE ACCESS
409	6702239.8	577924.7	CENTERLINE ACCESS
410	6702257.4	577922.8	CENTERLINE ACCESS
411	6702276.2	577917.4	CENTERLINE ACCESS
412	6702292.2	577915.3	CENTERLINE ACCESS
413	6702306.0	577914.4	CENTERLINE ACCESS
414	6702318.0	577913.1	CENTERLINE ACCESS
415	6702326.8	577911.6	CENTERLINE ACCESS
416	6702333.4	577908.2	CENTERLINE ACCESS
417	6702336.9	577903.9	CENTERLINE ACCESS
418	6702337.5	577898.8	CENTERLINE ACCESS
419	6702334.8	577894.6	CENTERLINE ACCESS
420	6702330.9	577892.3	CENTERLINE ACCESS
421	6702326.0	577892.0	CENTERLINE ACCESS
422	6702319.8	577893.4	CENTERLINE ACCESS
423	6702311.5	577896.6	CENTERLINE ACCESS
424	6702303.9	577900.7	CENTERLINE ACCESS
425	6702292.3	577907.8	CENTERLINE ACCESS
426	6702282.0	577913.0	CENTERLINE ACCESS
427	6702207.2	577915.9	CENTERLINE ACCESS
428	6702215.6	577900.6	CENTERLINE ACCESS
429	6702223.8	577886.0	CENTERLINE ACCESS
430	6702231.0	577872.3	CENTERLINE ACCESS
431	6702240.1	577859.3	CENTERLINE ACCESS
432	6702250.7	577848.1	CENTERLINE ACCESS
433	6702258.0	577840.4	CENTERLINE ACCESS
434	6702111.2	577886.6	CENTERLINE ACCESS
435	6702125.7	577878.1	CENTERLINE ACCESS
436	6702140.8	577867.2	CENTERLINE ACCESS
437	6702149.2	577858.1	CENTERLINE ACCESS
438	6702159.9	577842.1	CENTERLINE ACCESS
439	6702169.7	577829.0	CENTERLINE ACCESS
440	6702181.1	577813.9	CENTERLINE ACCESS
441	6702191.3	577799.2	CENTERLINE ACCESS
442	6702201.2	577783.9	CENTERLINE ACCESS
443	6702136.7	577914.0	CENTERLINE ACCESS
444	6702170.6	577919.9	CENTERLINE ACCESS
445	6702158.7	577922.6	CENTERLINE ACCESS
446	6702148.3	577923.0	CENTERLINE ACCESS
447	6702141.0	577923.1	CENTERLINE ACCESS
5001	6702470.5	577946.3	OHWM
5003	6702457.1	577934.4	OHWM
5004	6702330.6	577828.2	OHWM
5006	6702304.7	577801.9	OHWM
5009	6702362.1	577855.2	OHWM
5011	6702375.5	577865.0	OHWM
5013	6702387.4	577875.8	OHWM
5014	6702394.8	577882.6	OHWM
5017	6702397.6	577883.2	OHWM
5019	6702408.4	577893.1	OHWM
5021	6702422.7	577904.9	OHWM
5023	6702442.4	577921.7	OHWM
5024	6702226.7	577724.7	OHWM
5026	6702242.1	577740.4	OHWM
5028	6702255.4	577753.8	OHWM

TIES TO FEATURES UTM COORDINATES NAD 83-CSRS (EPOCH 2002) ZONE 8 CENTRAL MERIDIAN 135° WEST			
POINT	NORTHING	EASTING	DESCRIPTION
5030	6702278.6	577777.0	OHWM
5032	6702489.7	577961.0	OHWM
5034	6702481.8	577955.7	OHWM
7000	6702210.6	577737.0	CABIN
7001	6702209.8	577741.7	CABIN
7002	6702205.8	577741.2	CABIN
7003	6702206.5	577736.4	CABIN
7004	6702212.4	577748.4	HOUSE
7005	6702221.0	577754.3	HOUSE
7006	6702216.0	577761.4	HOUSE
7008	6702207.4	577755.5	HOUSE
7009	6702205.3	577762.6	CABIN
7010	6702202.0	577767.6	CABIN
7011	6702207.0	577770.9	CABIN
7012	6702210.4	577765.9	CABIN
7016	6702207.1	577799.4	ANCHOR
7019	6702233.5	577851.6	ANCHOR
7032	6702268.0	577914.1	HOUSE
7033	6702264.5	577901.7	HOUSE
7034	6702255.9	577904.2	HOUSE
7036	6702259.4	577916.5	HOUSE
7039	6702341.8	577913.3	ANCHOR
7043	6702161.6	577857.3	ANCHOR
7047	6702136.7	577938.2	HOUSE
7049	6702128.7	577928.9	HOUSE
7050	6702137.4	577929.7	HOUSE
7500	6702337.8	577911.0	POWER POLE
7501	6702305.2	577893.6	POWER POLE
7502	6702280.8	577924.2	POWER POLE
7503	6702233.3	577856.9	POWER POLE
7504	6702254.2	577837.4	POWER POLE
7505	6702208.2	577801.9	POWER POLE
7506	6702214.2	577774.4	POWER POLE
7507	6702161.9	577861.6	POWER POLE
7508	6702144.0	577916.0	POWER POLE



PLAN OF SURVEY OF
LOTS 1 TO 7
WITHIN LOT 1052, QUAD 105 C/5, CARCROSS / TAGISH FIRST NATION SETTLEMENT LAND
SELECTION R-23B, PLAN 101310 CLSR, 2013-0013 LTO

YUKON
SCALE 1 : 750
15 0 7.5 15 30 45 60 75 Metres
THE PLOT SIZE THAT WILL PROVIDE TRUE SCALE AND OPTIMUM READABILITY FOR THIS PLAN IS 609 mm X 1100 mm.
THIS SURVEY WAS EXECUTED ON OCTOBER 22, 2021 BY PAUL A. BURBIDGE, CLS.

LEGEND
BEARINGS ARE UTM GRID, DERIVED FROM GNSS OBSERVATIONS AND ARE REFERRED TO THE CENTRAL MERIDIAN OF UTM ZONE 8 (135° WEST LONGITUDE).
THIS PLAN SHOWS HORIZONTAL GROUND LEVEL DISTANCES IN METRES AND DECIMALS THEREOF. TO COMPUTE GRID DISTANCES, MULTIPLY GROUND LEVEL DISTANCES BY THE AVERAGE COMBINED SCALE FACTOR OF 0.999549.
CLS STANDARD POST FOUND SHOWN THUS
CLS '69 POST FOUND SHOWN THUS
CLS '77 POST FOUND SHOWN THUS
CLS '77 POST PLACED SHOWN THUS
20 cm SPIKE PLACED SHOWN THUS
GCP CONTROL STATION SHOWN THUS
TOPOGRAPHIC TIES SHOWN THUS
GUY LINE AND ANCHOR SHOWN THUS
POWER POLE SHOWN THUS
LANDS DEALT WITH BY THIS PLAN BOUNDED THUS
BUILDING SHOWN THUS
OVERHEAD POWERLINE SHOWN THUS
CENTERLINE ACCESS SHOWN THUS
TIES SHOWN THUS
OHWM SHOWN THUS
CTFN DENOTES CARCROSS / TAGISH FIRST NATION.
POSTS PLACED ARE MARKED WITH "2021" FOR THE YEAR OF THE SURVEY.
ALL PLACED MONUMENTS ARE MARKED WITH 0.05m X 0.05m X 0.60m LONG WOODEN MARKERS, UNLESS OTHERWISE NOTED. THESE MARKERS ARE PLACED 0.30m FROM THE MONUMENTS.
SURVEY REPORT RECORDED IN THE CLSR UNDER FIELD BOOK _____

UTM COORDINATES NAD83-CSRS (EPOCH 2002) ZONE 8 CENTRAL MERIDIAN 135° WEST					
POINT	NORTHING	EASTING	ELEVATION	CSF	ACCURACY
GCP 101	6702379.191	577872.215	797.316	0.999549	0.04
GCP 100	6702331.01	577897.27	797.56	0.999549	0.05
150	6702222.13	577728.04			
1002	6702418.63	578011.67			
1003	6702343.60	578089.06			
1005	6702208.12	577751.53			
1006	6702144.09	577858.88			
1007	6702143.76	577900.66			
1009	6702342.89	578046.18			
1500	6702139.80	578388.58			
2000	6702364.92	578067.07			
2001	6702318.39	578023.20			
2002	6702271.85	577979.32			
2003	6702221.25	577931.62			
2004	6702178.62	577891.43			
2005	6702289.31	578037.87			
2006	6702310.32	578015.59			
3000	6702272.50	577774.28			
3001	6702322.70	577824.07			
3002	6702373.44	577871.25			

POINT	NORTHING	EASTING
3003	6702423.09	577913.52
4004	6702474.83	577953.71
4006	6702142.65	578037.80
11001	6702455.72	577973.42