

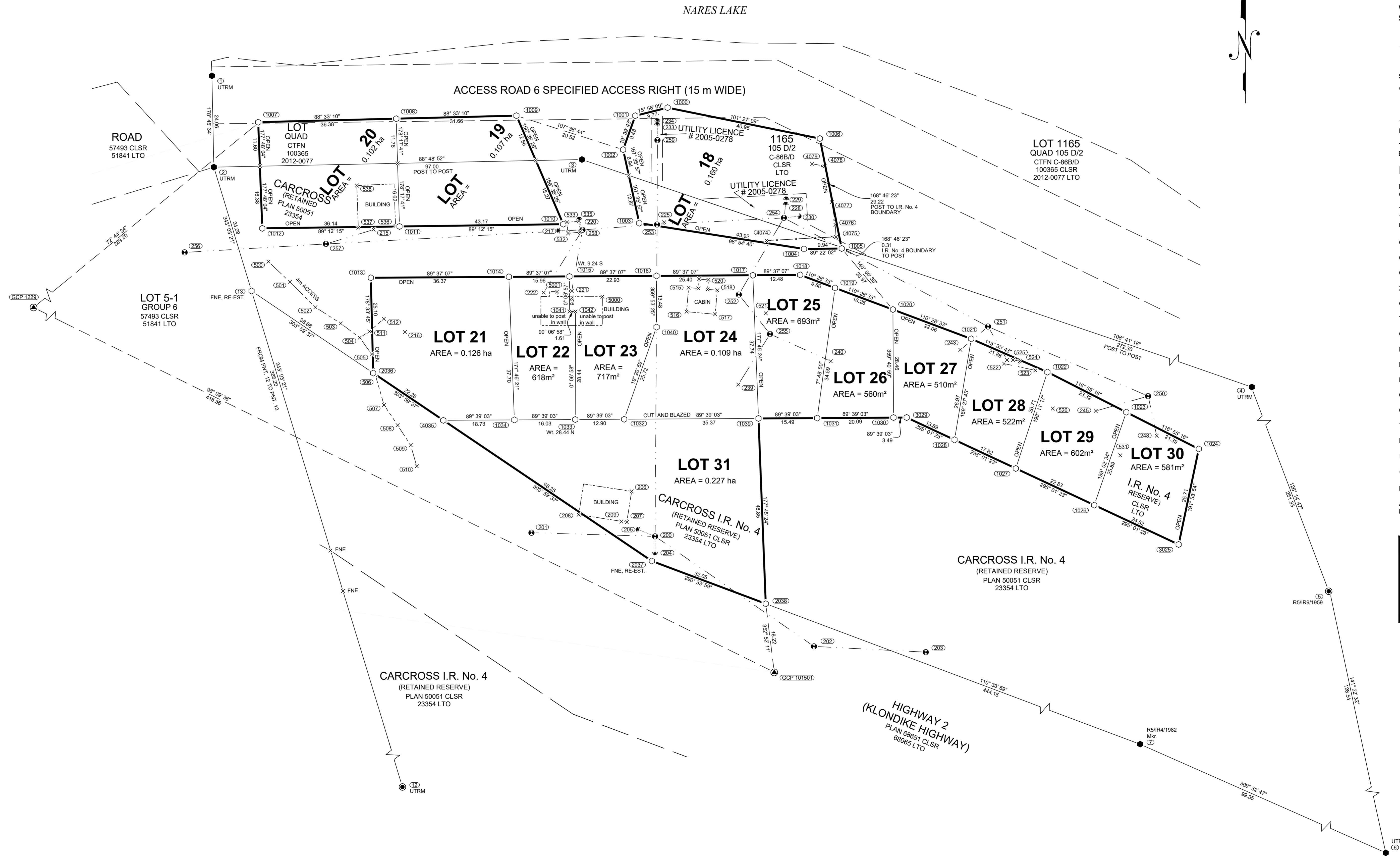
UTM COORDINATES NAD83-CSRS (EPOCH 2002) ZONE 8 CENTRAL MERIDIAN 135° WEST				
POINT	NORTHING	EASTING	ELEVATION	ACCURACY
GCP 1229	6669691.967	516816.086	664.753	0.999499
GCP 101501	6669632.90	517028.02	679.95	0.999497
1	6669789.95	516879.91		
2	6669765.90	516880.43		
3	6669767.91	516977.36		
4	6669680.70	517235.18		
5	6669532.17	517437.77		
6	6669431.80	517517.96		
7	6669495.03	517441.39		
12	6669381.27	516997.62		
13	6669733.30	516890.37		
1000	6669781.56	516999.91		
1001	6669779.43	516991.41		
1002	6669770.51	516988.22		
1003	6669751.17	516992.47		
1004	6669744.37	517035.84		
1005	6669744.48	517045.77		
1006	6669773.43	517040.03		
1007	6669777.73	516892.12		
1008	6669778.65	516928.47		
1009	6669779.45	516960.10		
1010	6669750.89	516972.46		
1011	6669750.29	516929.32		
1012	6669749.79	516893.20		
1013	6669736.78	516921.77		
1014	6669737.02	516958.12		
1015	6669737.12	516974.07		
1016	6669737.28	516996.99		
1017	6669737.45	517022.37		
1018	6669737.53	517034.85		
1019	6669734.10	517044.03		
1020	6669728.42	517059.25		
1021	6669720.71	517079.90		
1022	6669711.95	517099.94		
1023	6669701.40	517120.73		
1024	6669691.72	517139.79		
1026	6669676.94	517112.28		
1027	6669686.59	517091.61		
1028	6669694.12	517075.47		
1030	6669699.98	517059.40		
1031	6669699.85	517039.33		
1032	6669699.54	516988.50		
1033	6669699.46	516975.60		
1034	6669699.37	516959.58		
1039	6669699.76	517023.85		
1040	6669723.80	516997.02		
1041	6669727.90	516974.05		
1042	6669727.89	516975.66		
2036	6669711.70	516922.40		
2037	6669662.23	516995.76		
2038	6669650.97	517025.76		
3025	6669666.57	517134.49		
3029	6669700.00	517062.89		
4035	6669699.25	516940.86		

TIES TO FEATURES UTM COORDINATES NAD83-CSRS (EPOCH 2002) ZONE 8 CENTRAL MERIDIAN 135° WEST			
POINT	NORTHING	EASTING	DESCRIPTION
200	6669668.7	516996.6	POWER POLE
201	6669669.7	516994.1	POWER POLE
202	6669639.7	517038.5	POWER POLE
203	6669638.2	517067.9	POWER POLE
204	6669664.6	516996.6	ANCHOR
205	6669670.5	516992.3	ANCHOR
206	6669680.6	516990.5	BUILDING
207	6669672.5	516989.2	BUILDING
208	6669674.4	516976.5	BUILDING
209	6669672.6	516987.7	POWER LINE
215	6669749.5	516922.5	POWER LINE
216	6669722.5	516930.7	POWER LINE
217	6669749.2	516971.5	ANCHOR
220	6669752.0	516976.6	ANCHOR
221	6669733.3	516974.7	POWER LINE
222	6669732.9	516967.3	POWER LINE
225	6669751.4	516999.0	POWER LINE
228	6669756.0	517031.0	ANCHOR
229	6669757.4	517031.1	ANCHOR
230	6669753.0	517034.5	ANCHOR
233	6669777.0	516997.2	ANCHOR
234	6669778.0	516997.2	ANCHOR
239	6669708.7	517018.5	POWER LINE
240	6669714.8	517042.9	POWER LINE
243	6669717.8	517077.0	POWER LINE
245	6669701.7	517112.7	POWER LINE
248	6669695.2	517128.7	POWER LINE
250	6669705.6	517126.5	POWER POLE
251	6669723.9	517084.3	POWER POLE
252	6669732.4	517018.7	POWER POLE
253	6669750.8	516997.2	POWER POLE
254	6669752.5	517030.6	POWER POLE
255	6669722.0	517026.9	POWER POLE
256	6669743.5	516872.8	POWER POLE
257	6669745.7	516910.0	POWER POLE
258	6669749.4	516977.5	POWER POLE
259	6669773.0	516997.2	POWER POLE
500	6669741.0	516894.8	CENTERLINE 4m ACCESS
501	6669735.7	516900.4	CENTERLINE 4m ACCESS
502	6669729.0	516907.2	CENTERLINE 4m ACCESS
503	6669724.8	516913.9	CENTERLINE 4m ACCESS
504	6669721.0	516918.8	CENTERLINE 4m ACCESS
505	6669716.7	516922.0	CENTERLINE 4m ACCESS
506	6669711.1	516923.0	CENTERLINE 4m ACCESS
507	6669703.3	516925.2	CENTERLINE 4m ACCESS
508	6669698.0	516928.8	CENTERLINE 4m ACCESS
509	6669692.7	516932.3	CENTERLINE 4m ACCESS
510	6669687.2	516933.9	CENTERLINE 4m ACCESS
511	6669722.6	516921.4	CENTERLINE 4m ACCESS
512	6669726.0	516925.2	CENTERLINE 4m ACCESS
515	6669734.2	517005.5	CABIN
516	6669727.8	517004.9	CABIN
517	6669727.2	517012.4	CABIN
518	6669733.5	517013.0	CABIN
520	6669736.2	517010.7	CABIN
522	6669714.2	517088.5	BUILDING
523	6669712.4	517096.7	BUILDING
524	6669714.8	517092.6	BUILDING
525	6669715.2	517090.9	BUILDING
532	6669748.5	516973.7	SHED
533	6669751.4	516973.4	SHED
535	6669751.7	516976.6	SHED
536	6669750.4	516928.3	BUILDING
537	6669750.0	516918.4	BUILDING
538	6669761.1	516918.1	BUILDING

TIES TO FEATURES UTM COORDINATES NAD83-CSRS (EPOCH 2002) ZONE 8 CENTRAL MERIDIAN 135° WEST			
POINT	NORTHING	EASTING	DESCRIPTION
4074	6669746.6	517026.0	FENCE
4075	6669747.6	517044.3	FENCE
4076	6669750.7	517044.1	FENCE
4077	6669756.7	517043.1	FENCE
4078	6669766.1	517041.3	FENCE
4079	6669766.8	517038.0	FENCE
5000	6669731.8	516982.7	BUILDING
5001	6669733.1	516970.8	BUILDING

TABLE OF REFERENCE				
NEW PARCEL	INCLUDED PARCEL	CLSR PLAN	LTO PLAN	AREA INCLUDED
Lot 20	PORTION OF I.R. No. 4	50051	23354	598m ²
	PORTION OF LOT 1165	100365	2012-0077	424m ²
Lot 19	PORTION OF I.R. No. 4	50051	23354	667m ²
	PORTION OF LOT 1165	100365	2012-0077	403m ²
Lot 18	PORTION OF I.R. No. 4	50051	23354	370m ²
	PORTION OF LOT 1165	100365	2012-0077	0.123ha
Lot 21	PORTION OF I.R. No. 4	50051	23354	0.126ha
Lot 22	PORTION OF I.R. No. 4	50051	23354	618m ²
Lot 23	PORTION OF I.R. No. 4	50051	23354	717m ²
Lot 24	PORTION OF I.R. No. 4	50051	23354	0.109ha
Lot 25	PORTION OF I.R. No. 4	50051	23354	693m ²
Lot 26	PORTION OF I.R. No. 4	50051	23354	560m ²
Lot 27	PORTION OF I.R. No. 4	50051	23354	510m ²
Lot 28	PORTION OF I.R. No. 4	50051	23354	522m ²
Lot 29	PORTION OF I.R. No. 4	50051	23354	602m ²
Lot 30	PORTION OF I.R. No. 4	50051	23354	581m ²
Lot 31	PORTION OF I.R. No. 4	50051	23354	0.227ha

TABLE OF POST MARKINGS					
POINT NUMBER	POST MARKING	POINT NUMBER	POST MARKING	POINT NUMBER	POST MARKING
13	L5-1/1R/4/CLS2021	1013	L14/CLS2021	1028	L8/L9/CLS2021
1000	3L/CLS2021	1014	L14/L15/CLS2021	1030	L15/L8/CLS2021
1001	4L/CLS2021	1015	L5/L13 L5/L13 WT 9.24 S/CLS2021	1031	L7/L18/CLS2021
1002	8L/CLS2021	1016	L11/L14/CLS2021	1032	L13/L14/CLS2021
1003	6L/CLS2021	1017	L11/L17/CLS2021	1033	L5/L13 L5/L13 WT 28.44 N/CLS2021
1004	L1/CLS2021	1018	L7/CLS2021	1034	L4/L5/CLS2021
1005	L1/L1/CLS2021	1019	L1/L18/CLS2021	1039	L14/L7/CLS2021
1006	L1/CLS2021	1020	L1/L18/CLS2021	2036	2L4/CLS2021
1007	2L3/CLS2021	1021	L8/L9/CLS2021	2037	2L12/CLS2021
1008	L12/L13/CLS2021	1022	L18/L10/CLS2021	2038	L1/L12/CLS2021
1009	L13/CLS2021	1023	L110/L11/CLS2021	3025	L11/CLS2021
1010	L2/CLS2021	1024	L8/CLS2021	3029	L8/CLS2021
1011	L2/L3/CLS2021	1026	L10/L11/CLS2021	4035	3L4/CLS2021
1012	L3/CLS2021	1027	L9/L10/CLS2021		



PLAN OF SURVEY OF

LOTS 18 TO 20

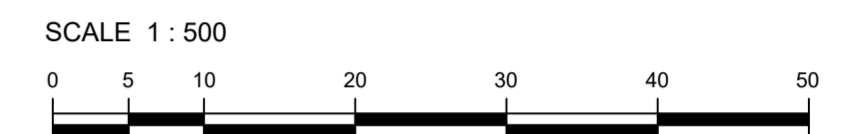
WITHIN CARCROSS I.R. No. 4, CARCROSS / TAGISH FIRST NATION SETTLEMENT LAND SELECTION (RETAINED RESERVE), PLAN 50051 CLSR, 23354 LTO, AND WITHIN LOT 1165, QUAD 105 D/2, CARCROSS / TAGISH FIRST NATION SETTLEMENT LAND SELECTION C-86B/D, PLAN 100365 CLSR, 2012-0077 LTO

AND

LOTS 21 TO 31

WITHIN CARCROSS I.R. No. 4, CARCROSS / TAGISH FIRST NATION SETTLEMENT LAND SELECTION (RETAINED RESERVE), PLAN 50051 CLSR, 23354 LTO

YUKON



THE PLOT SIZE THAT WILL PROVIDE TRUE SCALE AND OPTIMUM READABILITY FOR THIS PLAN IS 609 mm X 1300 mm.

THIS SURVEY WAS EXECUTED DURING THE PERIOD NOVEMBER 15, 2021 TO NOVEMBER 26, 2021 BY PAUL A. BURBIDGE, CLS.

LEGEND

BEARINGS ARE UTM GRID, DERIVED FROM GNSS OBSERVATIONS AND ARE REFERRED TO THE CENTRAL MERIDIAN OF UTM ZONE 8 (135° WEST LONGITUDE).

THIS PLAN SHOWS HORIZONTAL GROUND LEVEL DISTANCES IN METRES AND DECIMALS THEREOF. TO COMPUTE GRID DISTANCES, MULTIPLY GROUND LEVEL DISTANCES BY THE AVERAGE COMBINED SCALE FACTOR OF 0.999497.

- CLS STANDARD POST FOUND SHOWN THUS
- CLS 77 POST FOUND SHOWN THUS
- CLS 77 POST PLACED SHOWN THUS
- 20 cm SPIKE PLACED SHOWN THUS
- GCP CONTROL STATION SHOWN THUS
- TOPOGRAPHIC TIES SHOWN THUS
- GUY LINE AND ANCHOR SHOWN THUS
- POWER POLE SHOWN THUS
- LANDS BUILT WITH BY THIS PLAN BOUNDED THUS
- BUILDING SHOWN THUS
- OVERHEAD POWERLINE SHOWN THUS
- CENTERLINE ACCESS SHOWN THUS
- TIES SHOWN THUS
- FENCELINE SHOWN THUS
- UTRM DENOTES UNABLE TO READ MARKINGS.
- CTFN DENOTES CARCROSS / TAGISH FIRST NATION
- POSTS PLACED ARE MARKED WITH '2021' FOR THE YEAR OF THE SURVEY.
- ALL PLACED MONUMENTS ARE MARKED WITH 0.05m X 0.05m X 0.60m LONG WOODEN MARKERS, UNLESS OTHERWISE NOTED. THESE MARKERS ARE PLACED 0.30m FROM THE MONUMENTS.