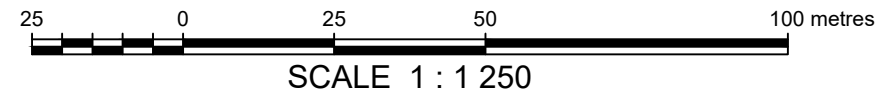


SKETCH OF PROPOSED LOTS

WITHIN LOT 1143 QUAD 105 D/2 CTFN C-17B
(PLAN 100362 CLSR, 2012-0087 LTO)



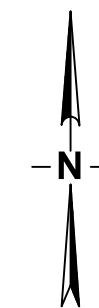
LEGEND

BEARINGS ARE UTM GRID AND ARE DERIVED FROM CADASTRAL DATA PROVIDED BY NATURAL RESOURCES CANADA.

DISTANCES ARE HORIZONTAL AT GROUND LEVEL AND ARE EXPRESSED IN METERS.

LANDS DEALT WITH BY THIS SKETCH SHOWN THUS ———

CARCROSS/TAGISH FIRST NATION, YUKON



AREA TABLE	
Lot No.	Area (ha.)
1	1.09 ha.
2	1.00 ha.
3	0.850 ha.
TOTAL	2.94 ha.

SUBJECT TO THE LIMITATIONS HEREON:

1. THIS SKETCH IS NOT TO BE USED TO DEFINE PROPERTY BOUNDARIES.

	302 Jarvis Street Whitehorse, Yukon Y1A 2H2 (PH) 867-668-6940 email: whitehorse@chalgeo.com	DRAWN BY: LM	JOB#: 37810
		CHECKED BY: PB	FILE: 37810 FNLM-CTFN C-17 Chooutla Nares Beach.dwg
		DATE : 2021-05-13	LAYOUT: C-17