

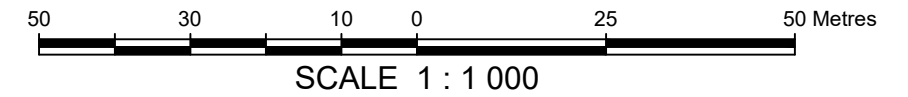
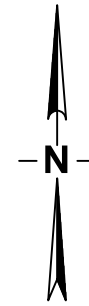
# SKETCH OF PROPOSED LOTS

WITHIN LOT 1165 QUAD 105 D/2 CTFN C-86B/D

(PLAN 100365 CLSR, 2012-0077 LTO)

AND CARCROSS IR NO 4 (PLAN 50051 CLSR, 23354 LTO)

CARCROSS/TAGISH FIRST NATION, YUKON



## LEGEND

BEARINGS ARE UTM GRID AND ARE DERIVED FROM CADASTRAL DATA PROVIDED BY NATURAL RESOURCES CANADA.

DISTANCES ARE HORIZONTAL AT GROUND LEVEL AND ARE EXPRESSED IN METERS.

LANDS DEALT WITH BY THIS SKETCH SHOWN THUS ———



## AREA TABLE

Lot No.	Area (ha.)
1	0.225 ha.
2	0.109 ha.
3	0.102 ha.
4	0.127 ha.
5	0.058 ha.
6	0.063 ha.
7	0.069 ha.
8	0.051 ha.
9	0.053 ha.
10	0.055 ha.
11	0.063 ha.
12	0.226 ha.
13	0.061 ha.
14	0.061 ha.
15	0.056 ha.
<b>TOTAL</b>	<b>1.38 ha.</b>

### SUBJECT TO THE LIMITATIONS HEREON:

1. THIS SKETCH IS NOT TO BE USED TO DEFINE PROPERTY BOUNDARIES.

	302 Jarvis Street Whitehorse, Yukon Y1A 2H2 (PH) 867-668-6940 email: whitehorse@chalgeo.com	DRAWN BY: LM	JOB#: 37815
		CHECKED BY:	FILE: 37815 FNLM-CTFN C-86B Retained.dwg
		DATE: 2021-05-12	LAYOUT: C-86